



B I K E T E C H N O L O G Y

2013

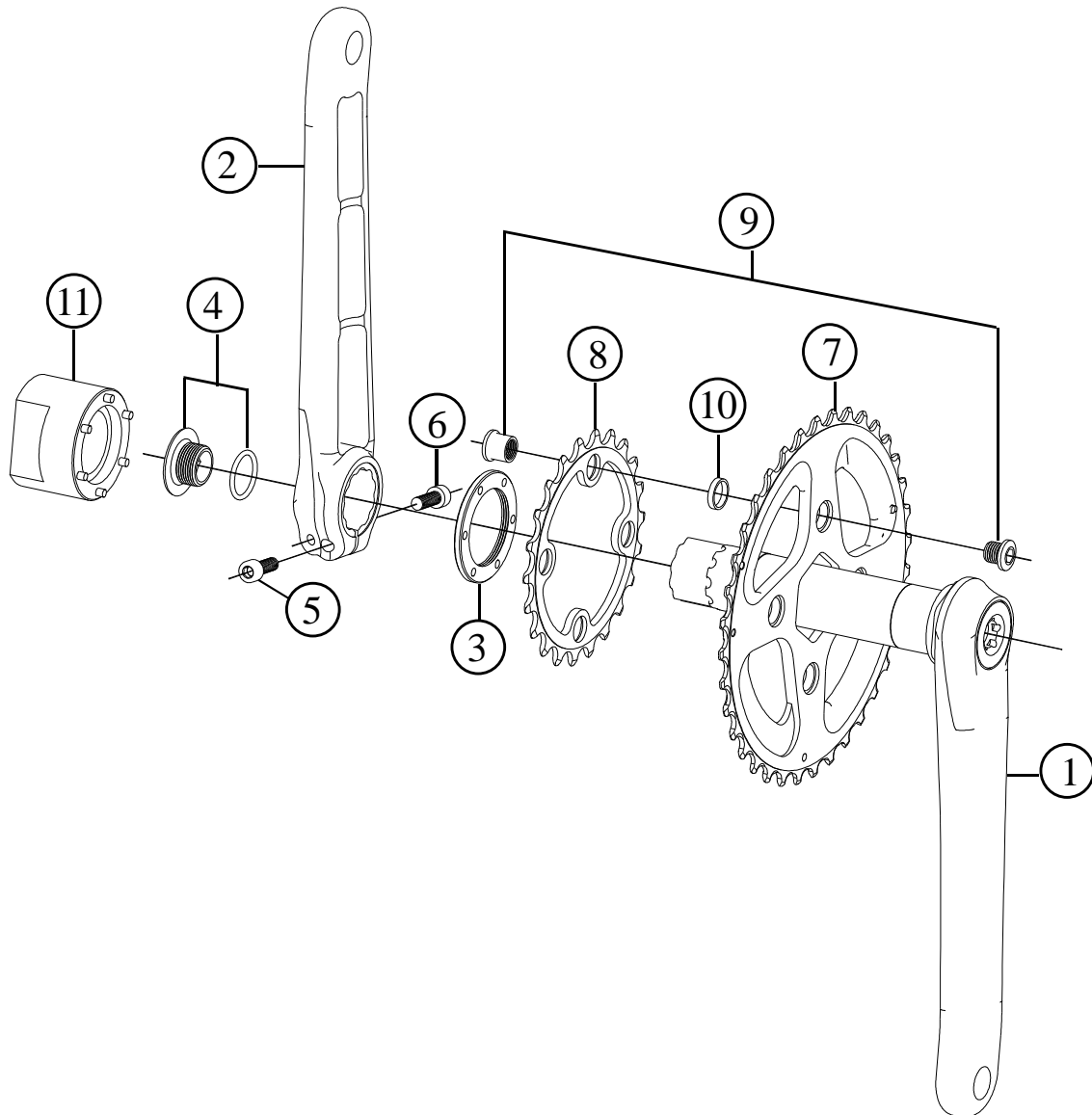
SPARE PART

MANUAL

&

PRICE LIST

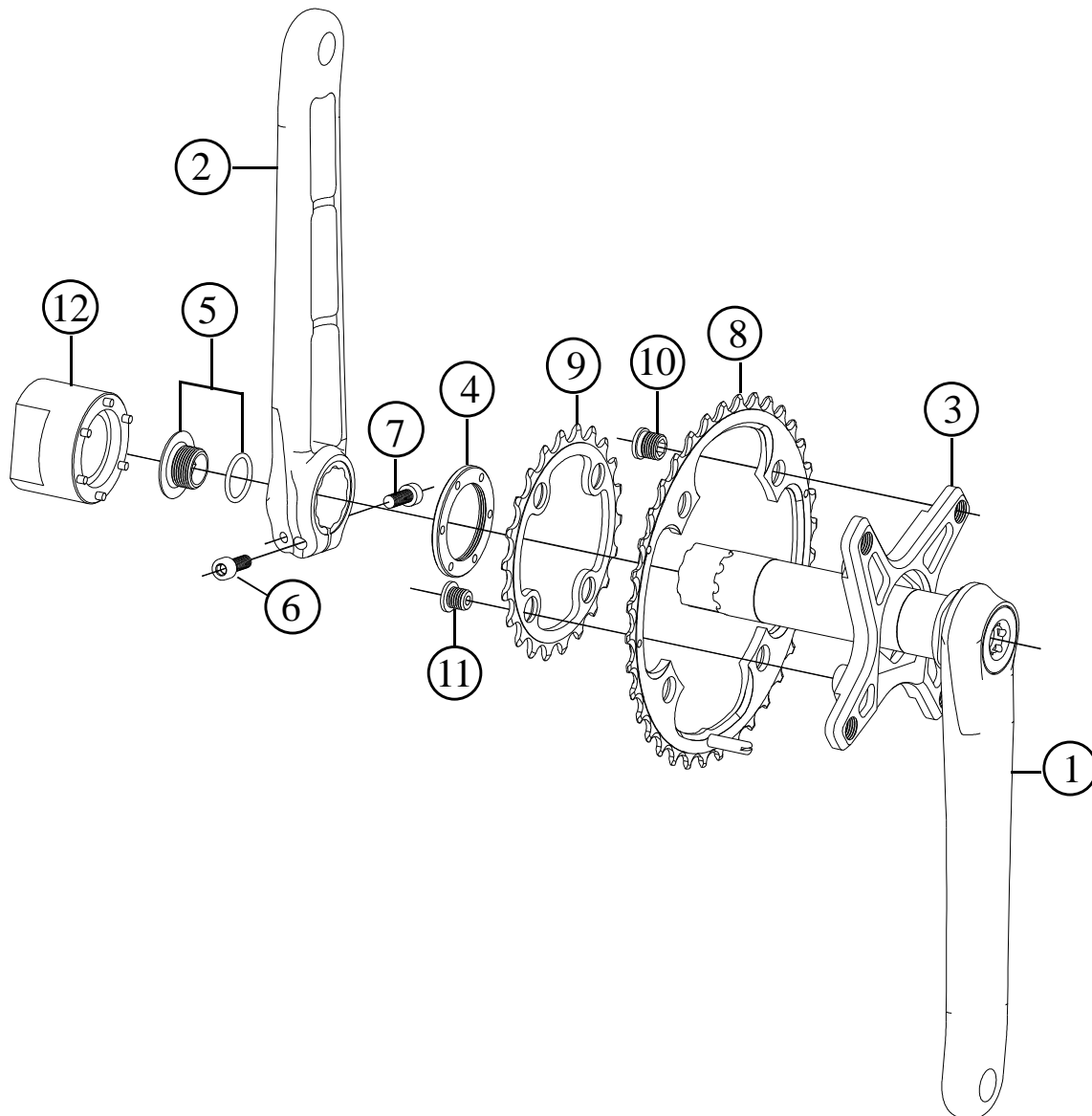
2013



Item no.	Code	DESCRIPTION	Price €
1	CU3RCA	Integral Right Arm with 25mm Axle. 170-172,5-175 mm – Black Hard Anodised	170,0
2	CU3LCA	Integral Left Arm with 25mm Axle. 170-172,5-175 mm - Black Hard Anodised	115,0
3	CU006	Lock Ring	6,0
4	CU18R	Bolt for Play Adjustment. (Black, Red, Titan, Blue, Orange ano.)+O-Ring 2056 (I.D. 14x1,78mm)	6,0
5 - 6		Allen bolt M5 x 12 + M5 x 15 / Titanium - Gold Plated	Set of 2 pcs 14,9 set
7	CU40NS	Chain Ring NS 40T BCD 85mm Black anodised	82,0
7	CU38NS	Chain Ring NS 38T BCD 64mm Black anodised	82,0
7	CU36NS	Chain Ring NS 36T BCD 64mm Black anodised	74,0
8	CU27NS	Chain Ring NS 27T BCD 85mm (compat. 40/42NS rings only) Black anodised	32,0
8	CU24NS	Chain Ring NS 24T BCD 64mm (compat. 38NS ring only) Black anodised	32,0
8	CU22NS	Chain Ring NS 22T BCD 64mm (compat. 36NS ring only) Black anodised	24,0
9	CU004G	Chainring Fixing Bolt & Nut: Black, Red, Titan, Blue, Orange anodised	Kit of 4 sets 19,0 kit
10	CU004S	Chainring Spacer NS – Light Alloy	Set of 4 pcs 1,6 set
11	NSTOOL25	Tool to disassemble the Lock Ring – Axle 25mm	21,0

Specifications are subject to change without notice

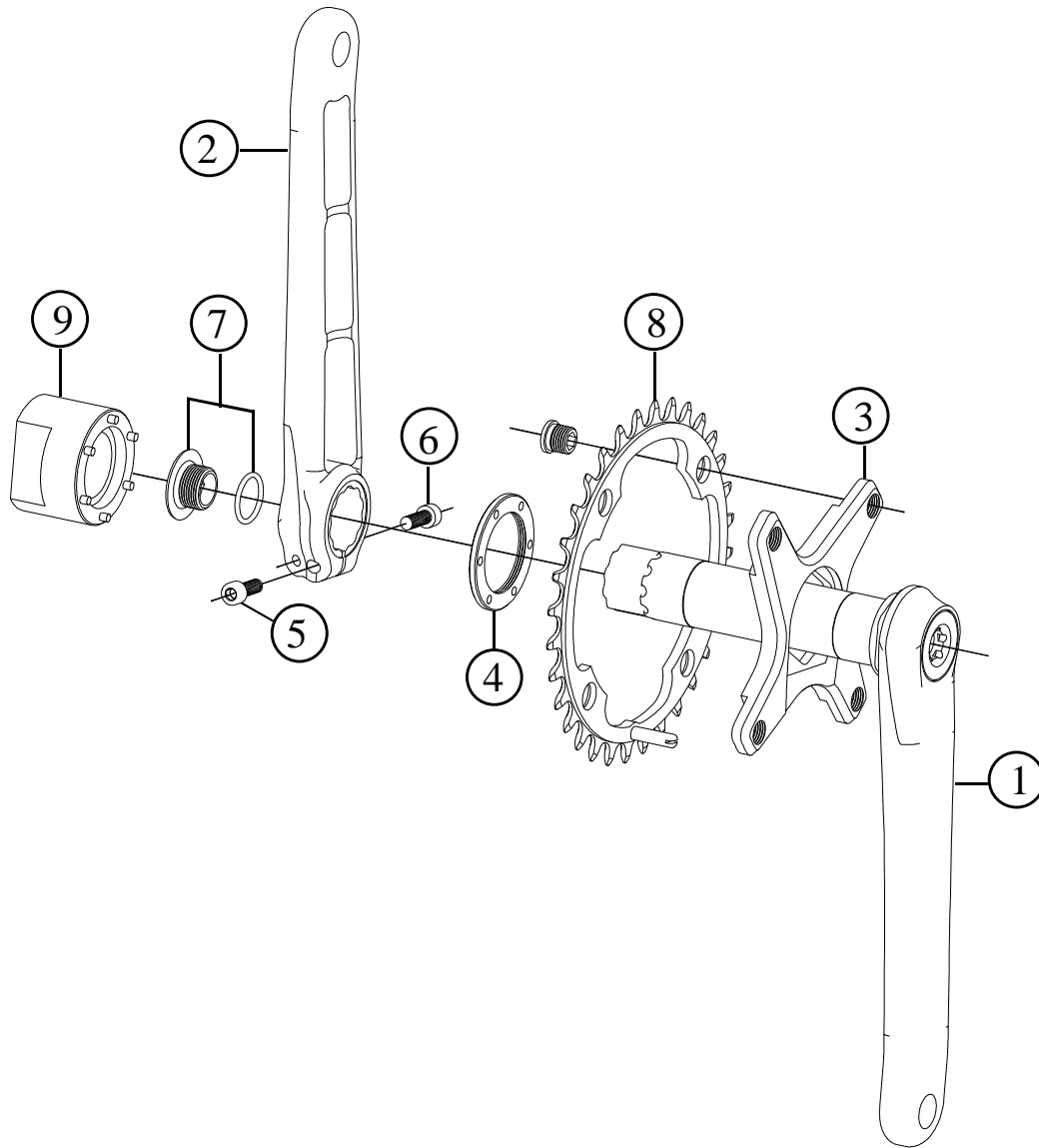
2013



Item no.	Code	DESCRIPTION	Price €
1	CU3RCA	Integral Right Arm with 25mm Axle. 170-172,5-175 mm – Black Hard Anodised	170,0
2	CU3LCA	Integral Left Arm with 25mm Axle. 170-172,5-175 mm - Black Hard Anodised	115,0
3 - 10	CU3DS	Spider for Double Chainring. BCD 104-64mm. Black Anodised. Laser Etched "Enduro" + Bolts	80,0
4	CU006	Lock Ring	6,0
5	CU18R	Bolt for Play Adjustment. (Black, Red, Titan, Blue, Orange ano.)+O-Ring 2056 (I.D. 14x1,78mm)	6,0
6 - 7		Allen bolt M5 x 12 + M5 x 15 / Titanium - Gold Plated	Set of 2 pcs 14,9 set
8	3TO236T	3TO2 Chainring for Conversion. 36T. BCD 104mm. Black Anodised.	52,0
9	22NS	22T Chainring. BCD 64mm. Black Anodised	22,0
10	CU005H	Fixing Bolt for Large Chainring. Compatible with Spider Nr. 3. Red Anodised	Set of 4 pcs 10,0 set
11	CU005G	Fixing Bolt for Small Chainring	Set of 4 pcs 10,0 set
12	NSTOOL30	Tool to disassemble the Lock Ring – Axle 25mm	21,0

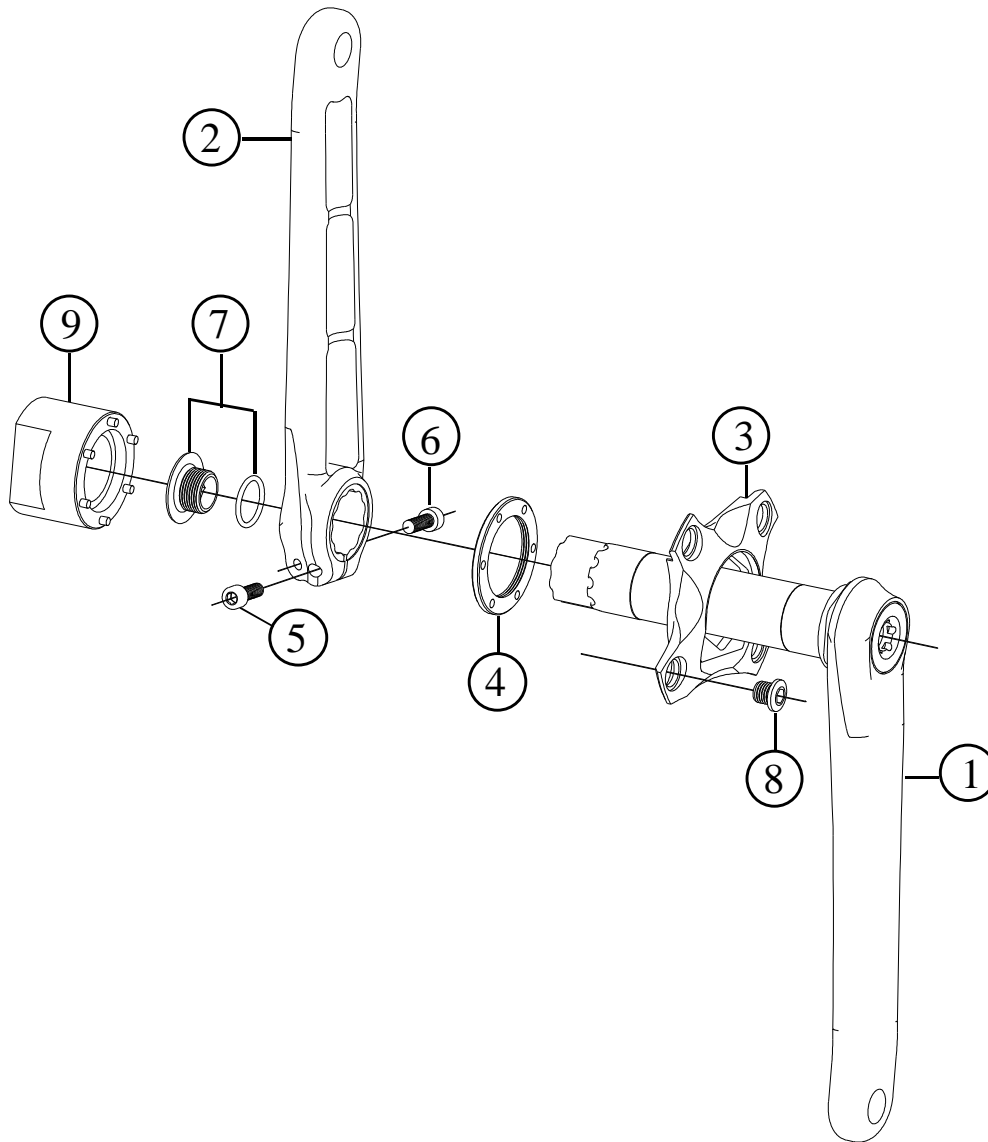
Front Crankset for MTB
CU3-M10 SINGLE

2013

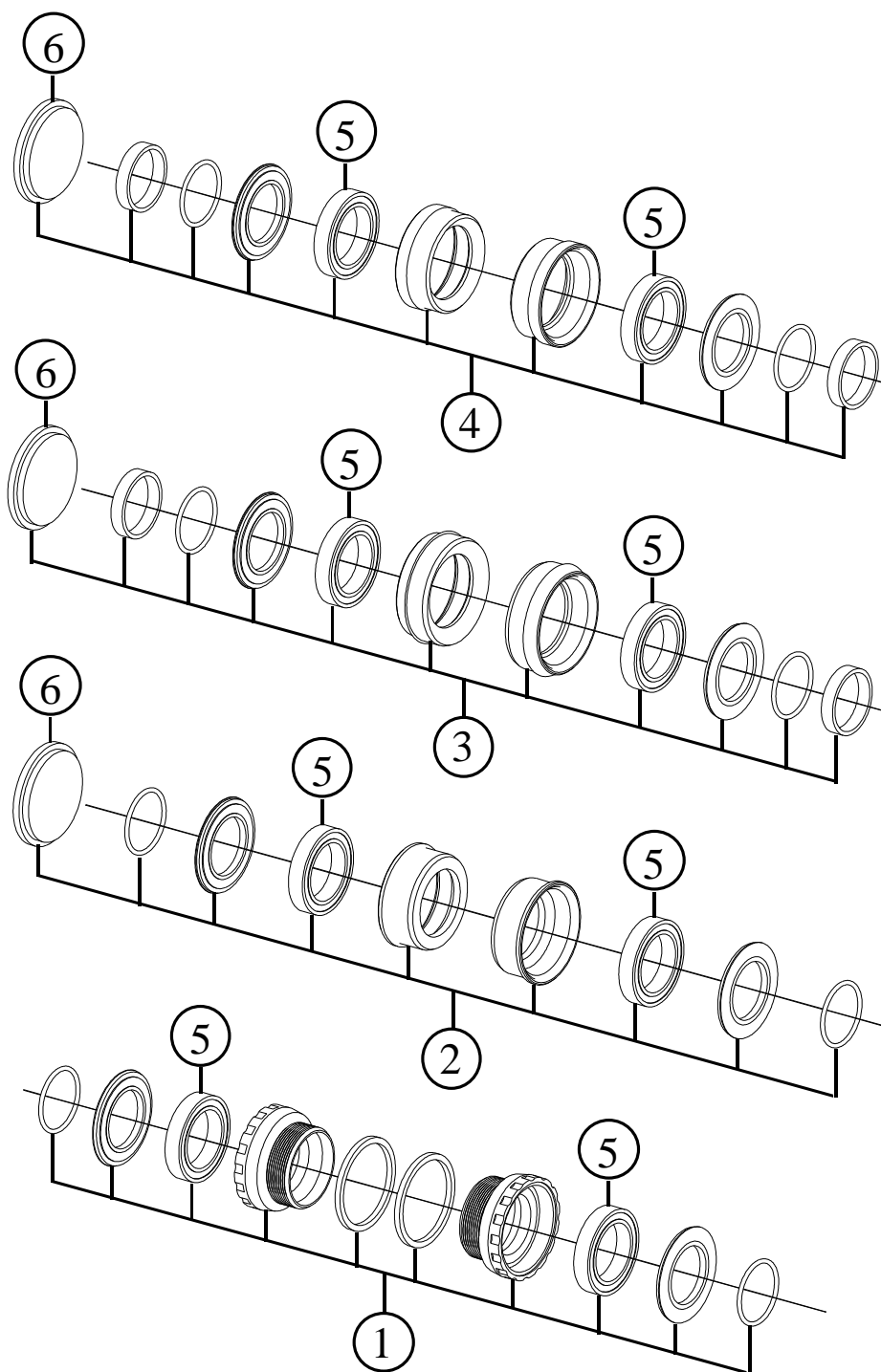


Item no.	Code	DESCRIPTION	Price €
1	CU3RCA	Integral Right Arm with 25mm Axle. 170-172,5-175 mm – Black Hard Anodised	170,0
2	CU3LCA	Integral Left Arm with 25mm Axle. 170-172,5-175 mm - Black Hard Anodised	115,0
3-10	CU3SS	Spider for Single Chainring. BCD 104mm. Black Anodised + Bolts	75,0
4	CU006	Lock Ring	6,0
5-6		Allen bolt M5 x 12 + M5 x 15 / Titanium - Gold Plated	Set of 2 pcs 14,9 set
7	CU18R	Bolt for Play Adjustment. (Black, Red, Titan, Blue, Orange ano.)+O-Ring 2056 (I.D. 14x1,78mm)	6,0
8	32TLTSC	32T Chainring for Single. BCD 104mm. Black Anodised	35,0
8	32TLTSC	34T Chainring for Single. BCD 104mm. Black Anodised	36,0
8	32TLTSC	36T Chainring for Single. BCD 104mm. Black Anodised	36,0
9	NSTOOL30	Tool to disassemble the Lock Ring – Axle 25mm	21,0
10	CU005H	Fixing Bolt for Large Chainring. Compatible with Spider Nr. 3. Red Anodised	Set of 4 pcs 10,0 set

Specifications are subject to change without notice



Item no.	Code	DESCRIPTION	Price €
1	CU3RCA	Integral Right Arm with 25mm Axle. 170-172,5-175 mm – Black Hard Anodised	170,0
2	CU3LCA	Integral Left Arm with 25mm Axle. 170-172,5-175 mm - Black Hard Anodised	115,0
3	CU3SXX1	Spider for Sram XX1 Original Chainrings	74,0
4	CU006	Lock Ring	6,0
5 - 6		Allen bolt M5 x 12 + M5 x 15 / Titanium - Gold Plated	Set of 2 pcs 14,9 set
7	CU18R	Bolt for Play Adjustment. (Black, Red, Titan, Blue, Orange ano.)+O-Ring 2056 (I.D. 14x1,78mm)	6,0
8	CU005G	Fixing Bolt for Small Chainring	Set of 4 pcs 10,0 set
9	NSTOOL30	Tool to disassemble the Lock Ring – Axle 30mm	21,0

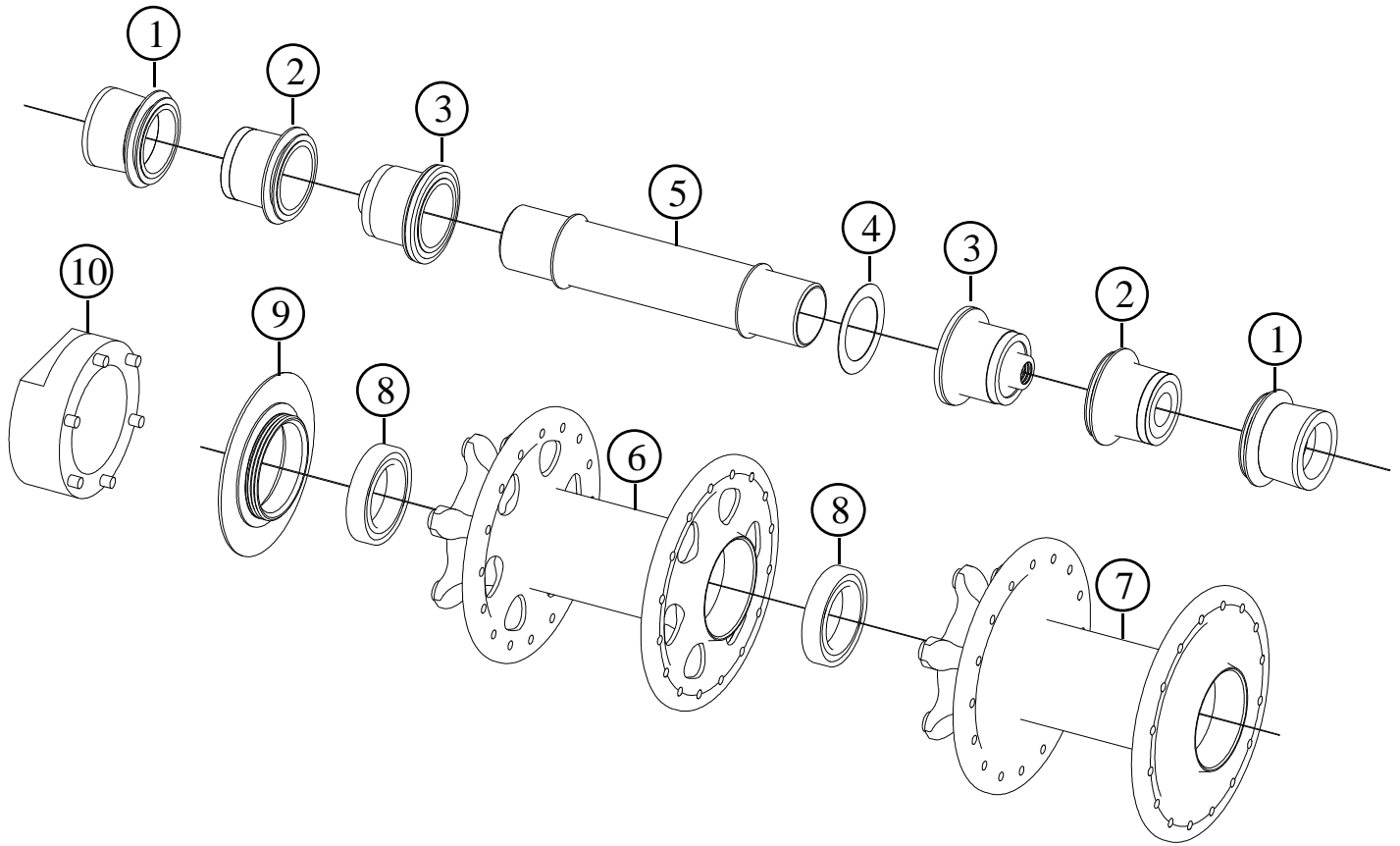


Item no.	Code	DESCRIPTION	Price €
1	BSABBKIT	BSA Bottom Bracket Kit including Cups, Bearings, Spacers (for 68 or 73mm Shells)	89,0
2	PFBBKIT	Press-Fit Bottom Bracket Kit including Cups, Bearings, Spacers (for 89,5 or 93mm Shells)	89,0
3	PF30BBKIT	Press-Fit 30 Bottom Bracket Kit including Cups, Bearings, Spacers (for 73mm Shells)	89,0
4	BB30BBKIT	BB 30 Bottom Bracket Kit including Cups, Bearings, Spacers (for 73 or 84,5mm Shells)	89,0
5		Nachi Bearing (Double Seal) 25 x 37 x 7mm	Set of 2 pcs 41,4 set
6		Press-Tool to install pressed cups into frames	3,0

Specifications are subject to change without notice

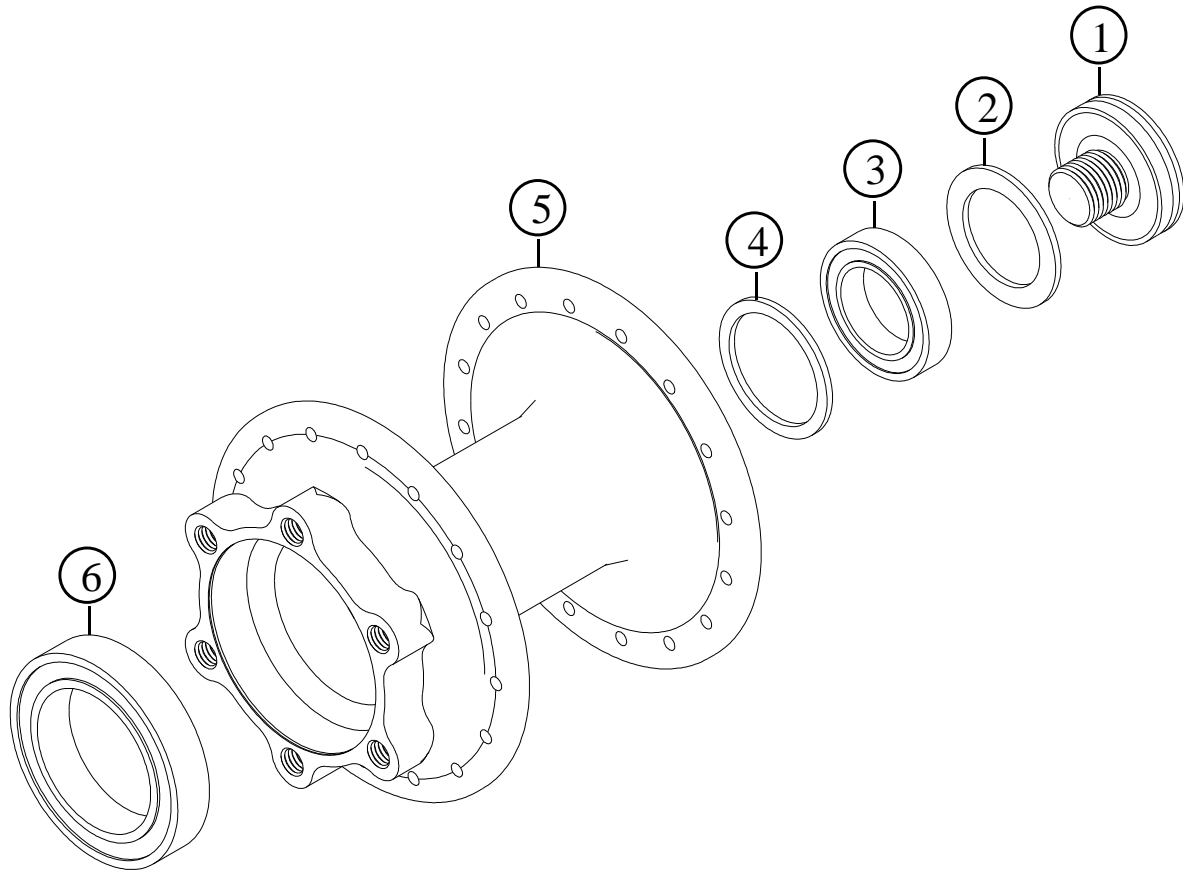
Front Hub for MTB
URANO SUPER RACE
URANO

2013



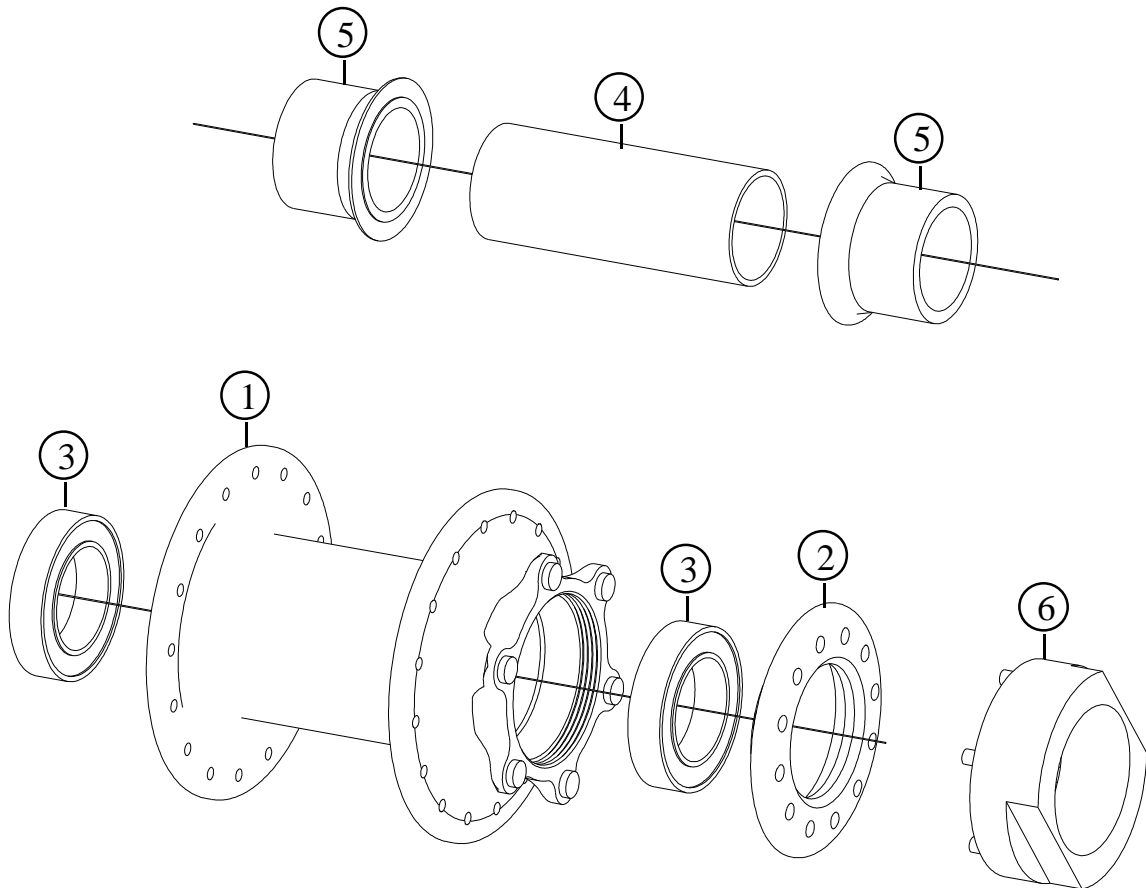
Item no.	Code	DESCRIPTION	Price €
1	FHURACE15	Axle Cap End for 15mm forks. Inner dia. 17mm/ Light Alloy	Set of 2pcs 12,0 set
2	FHURACE9	Axle Cap End for 9mm Through-Axle Quick Release. Inner dia. 17mm/ Light Alloy.	Set of 2pcs 12,0 set
3	FHURACE	Axle Cap End for Quick Release with 5mm Axle. Inner dia. 17mm/ Light Alloy	Set of 2pcs 12,0 set
4	SW1724015	Steel washer: 17 x 24 x 0,15mm	Set of 10pcs 1,0 set
5	FHURAX	Axle dia. 17mm. Light Alloy. Hard Anodised	25,0
6	FHURB	Urano Super Race Body Hub Body /Alloy	63,0
7	FHURSRB	Urano Hub Body / Alloy	50,0
8	HUBMKIT	Bearing Enduro 17 x 26 x 5mm ABEC5 61803 2RS	Set of 2pcs 20,4 set
9	URDLR6H	Disc Lock-Ring for use with specific 6 pin Tool / Light Alloy	12,0
10	URDLRTOOL	Disc Lock-Ring Tool (6 pins)	21,0

Specifications are subject to change without notice



Item no.	Code	DESCRIPTION	Price €
1	FH116L	Lock-nut bolt in light alloy. Thread 10x1 mm	6,0
2	3FH02DS	Rubber Seal: 24 x 17 x 1	0,3
3	EB6802	Bearing Enduro 24 x 15 x 5mm ABEC5 6802 2RS	9,6
4	FHURLYSP	Bearing Spacer 23,8 x 19,5 x 1,2mm / Light Alloy	0,6
5	FHURLYB	Hub Body Lefty / Alloy	77,0
6	BB37257RS	Bearing Nachi 6805 2RS 37 x 25 x 7mm (double seal)	20,7

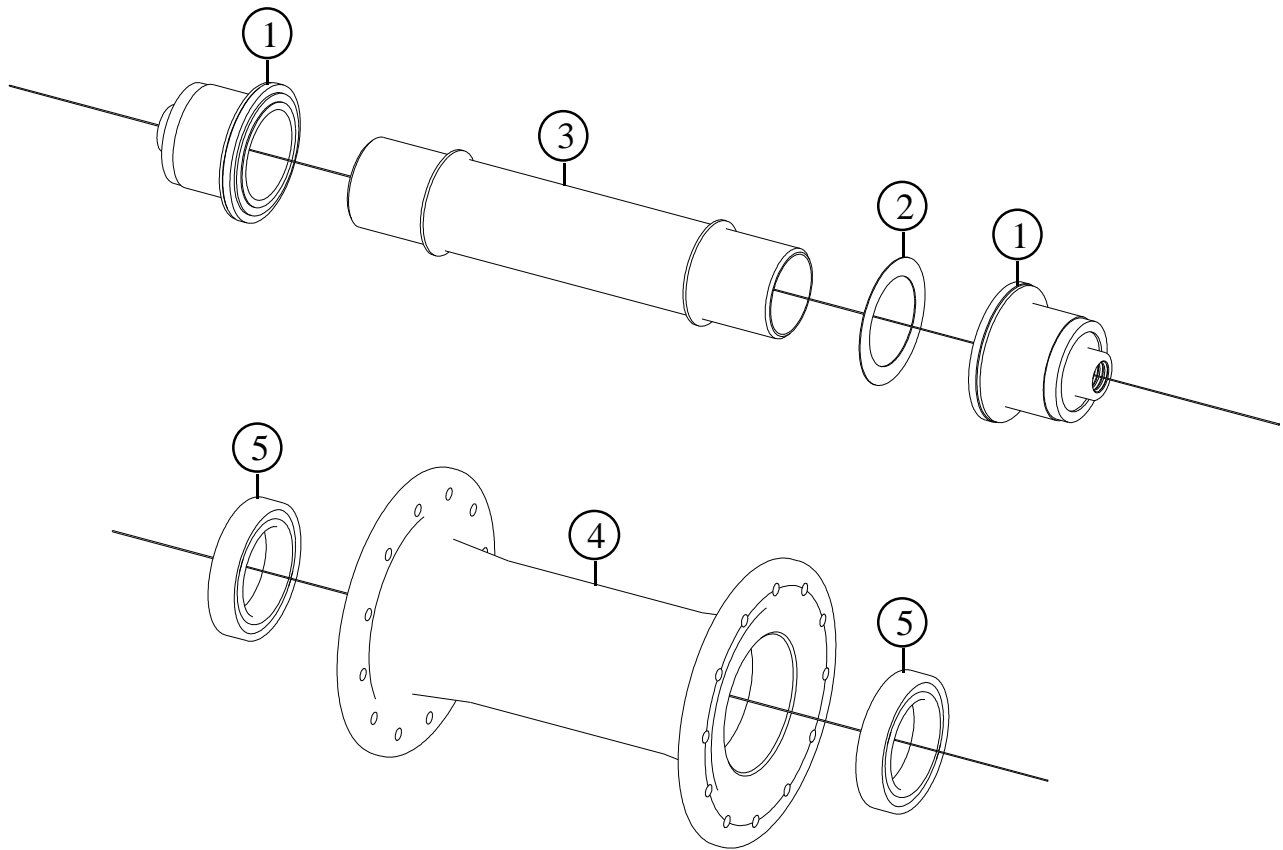
2013



Item no.	Code	DESCRIPTION	Price €
1	FHURQR20BLK	Hub Body QR20 / Alloy. Black anodised. 32H	60,0
2	URDLR6HQR20	Disc Lock-Ring QR20 for use with specific 6 pin Tool / Light Alloy	12,0
3	HUB20MKIT	Enduro bearing 20 x 32 x 7mm ABEC5 2RS	Set of 2pcs 24,0 set
4	FHTISP	Spacer 22x57mm. Light Alloy	5,0
5	FHTIACQR20	Axle Cap End QR20 compatible with QR20 forks. Light Alloy	Set of 2pcs 14,0 set
6	URDLRTOOL	Disc Lock-Ring Tool (6 pins)	21,0

Specifications are subject to change without notice

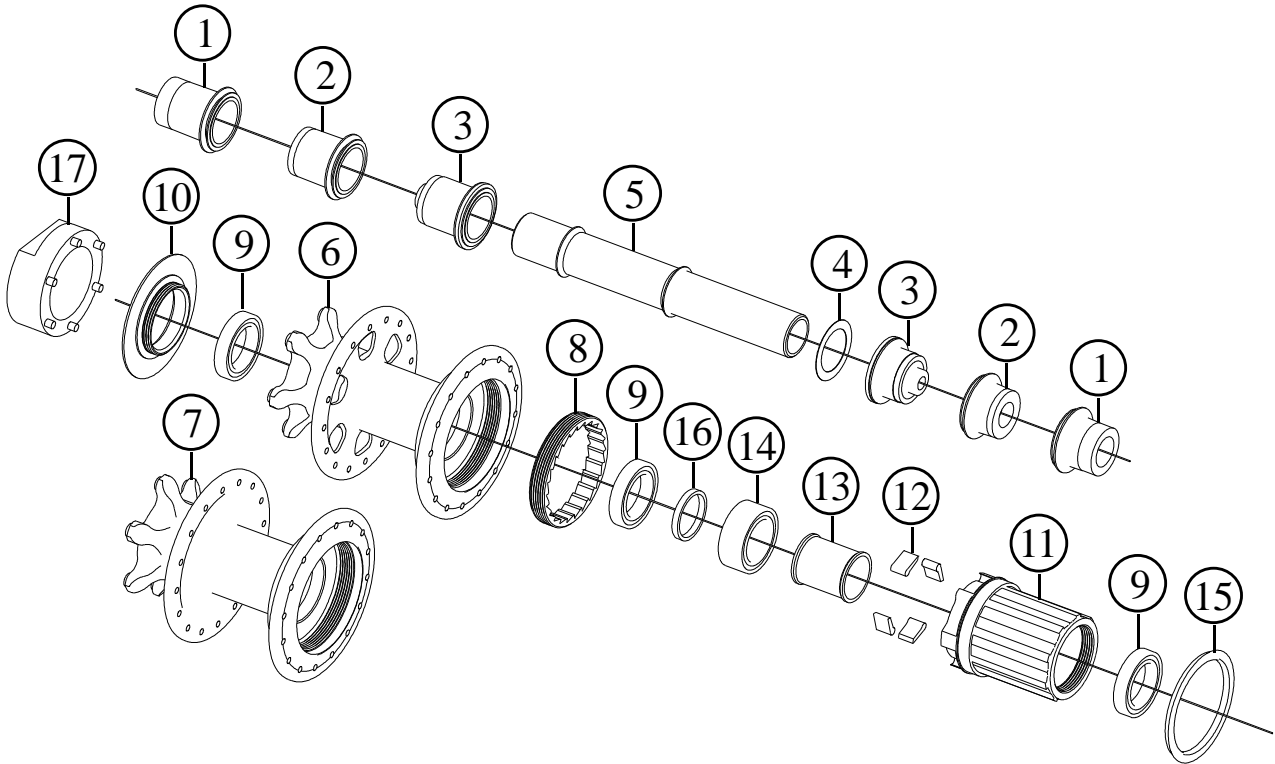
2013



Item no.	Code	DESCRIPTION		Price €
1	FHURACE	Axle Cap End. Inner dia. 17mm/ Light Alloy	Set of 2 pcs	12,0 set
2	SW1724015	Steel washer: 17 x 24 x 0,15mm	Set of 10 pcs	1,0 set
3	FHURAX	Axle dia. 17mm. Light Alloy. Hard Anodised		25,0
4	FHARB	Hub Body /Alloy		44,0
5	HUBMKIT	Bearing Enduro 17 x 26 x 5mm ABEC5 61803 2RS	Set of 2 pcs	20,4 pc

Rear Hub for MTB
URANO SUPER RACE
URANO

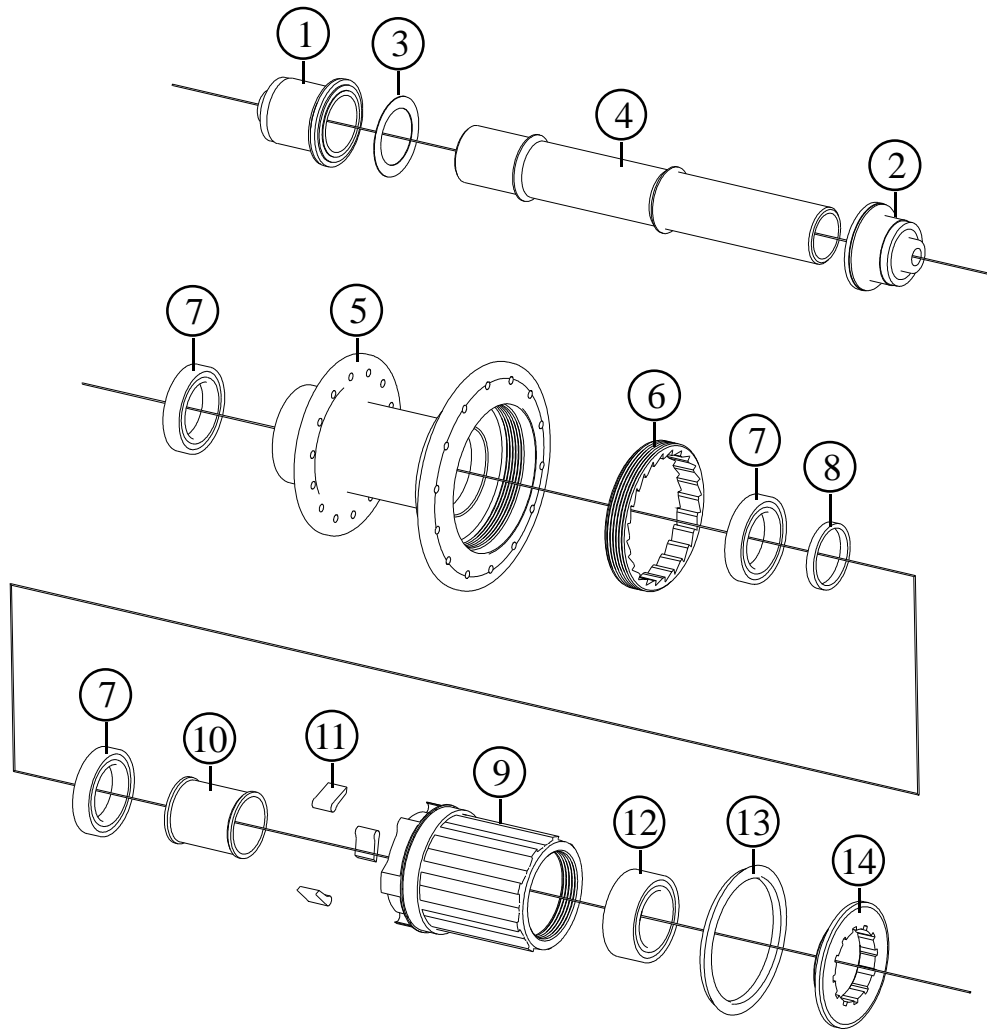
2013



Item no.	Code	DESCRIPTION		Price €
1	RHURACEX12	Axle Cap Ends X12 (142 x12mm). L&R. Inner dia. 17mm	Set of 2 pcs	12,0 set
2	RHURACE10	Axle Cap Ends for 10mm Through-Axle Quick R. L&R. Inner dia. 17mm	Set of 2 pcs	12,0 set
3	RHURACE	Axle Cap Ends for Quick Release with 5mm axle. L & R. Inner dia. 17mm	Set of 2 pcs	12,0 set
4	SW1724015	Steel washer: 17 x 24 x 0,15mm	Set of 10 pcs	1,0 set
5	RHURAX	Axle dia. 17mm. Length 123,5mm. Light Alloy. Hard Anodised		30,0
6	RHURB	Urano Super Race Hub Body /Alloy		73,0
7	RHURSRB	Urano Hub Body /Alloy		60,0
8	RHURSTR	Teethed Ring in Steel (Urano)		16,0
8	RHURSTR	Teethed Ring in Titanium (Urano Super Race)		44,0
9	HUBMKIT	Enduro Bearing 17 x 26 x 5mm ABEC5 2RS	Set of 2pcs	20,4 set
10	URDLR6H	Disc Lock-Ring for use with specific 6 pin Tool / Light Alloy		12,0
11	RHURFW4P	Freewheel Body at 4 Pawls. Light Alloy. Black Anodised		30,0
12	RHURFWP	Freewheel Pawl in High Steel + Coil Spring	Set of 4 pcs	10,0 set
13 - 16	RHURFWS	Freewheel Spacers 20 x 17 x 23mm + 20 x 17 x 2,8mm / Light Alloy	Set of 2 pcs	2,5
9 - 14 -15	FRWMKIT	Enduro Bearings : 01 17x26x5mm + 01 17x26x10mm+Lip Seal SE 37x44,5x2,5 VG	Set of 3 pcs	32,5
15	SE3744525VG	Rubber Lip Seal SE 37 x 44,5 x 2,5 VG		4,0
17	URDLRTOOL	Disc Lock-Ring Tool (6 pins)		21,0

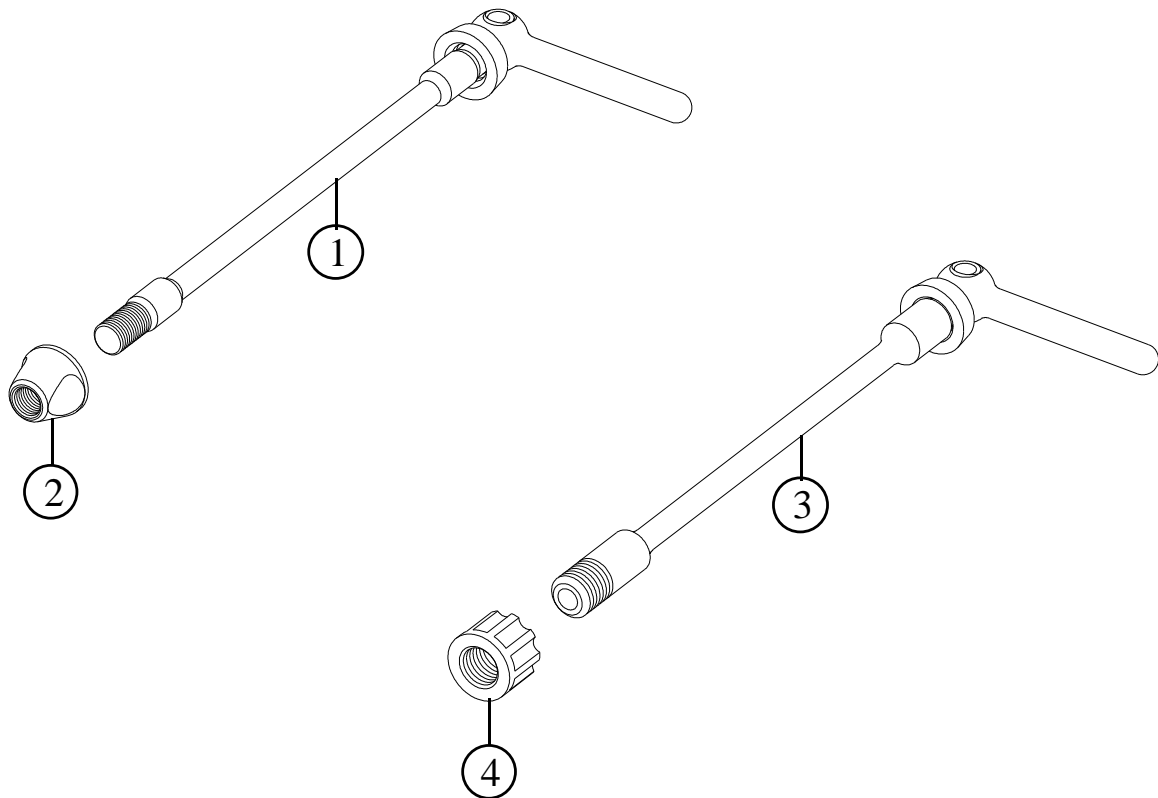
Specifications are subject to change without notice

2013



Item no.	Code	DESCRIPTION	Price €
1	RHURACEL	Axle Cap End. Left Side. Inner dia. 17mm/ Light Alloy	6,0
2	RHURACER	Axle Cap End. Right Side. Inner dia. 17mm/ Light. Alloy	6,0
3	SW1724015	Steel washer: 17 x 24 x 0,15mm	Set of 10 pcs 1,0 set
4	RHURAXR	Axle dia. 17mm. Length 118.5mm. Light Alloy. Hard Anodised	30,0
5	RHARBBLK	Hub Body /Alloy. Black anodised	51,0
6	RHURSTR	Teethed Ring in Steel	16,0
7	HUBMKIT	Enduro Bearing 17 x 26 x 5mm ABEC5 2RS	Set of 2pcs 20,4 set
8 - 10	RHURBS	Bearing Spacers 20x17x2,8mm + 20 x 17 x 23mm / Light Alloy	Set of 2 pcs 2,5
9	RHURFWB	Freewheel Body at 3 Pawls. Light Alloy. Blue Anodised	30,0
11	RHURFWP	Freewheel Pawl in High Steel + Coil Spring	Set of 3 pcs 8,0 set
7 - 12 -13	FRWMKIT	Enduro Bearings: 01 17x26x5mm +17x26x10mm + Lip Seal SE 37x44,5x2,5 VG	Set of 3 pcs 32,5 set
13	SE3744525VG	Rubber Lip Seal SE 37 x 44,5 x 2,5 VG	4,0
14	RHLRSH11	Lock-ring in light alloy for cog-set – 11T	9,0
14	RHLRSH12	Lock-ring in light alloy for cog-set – 12T	9,0

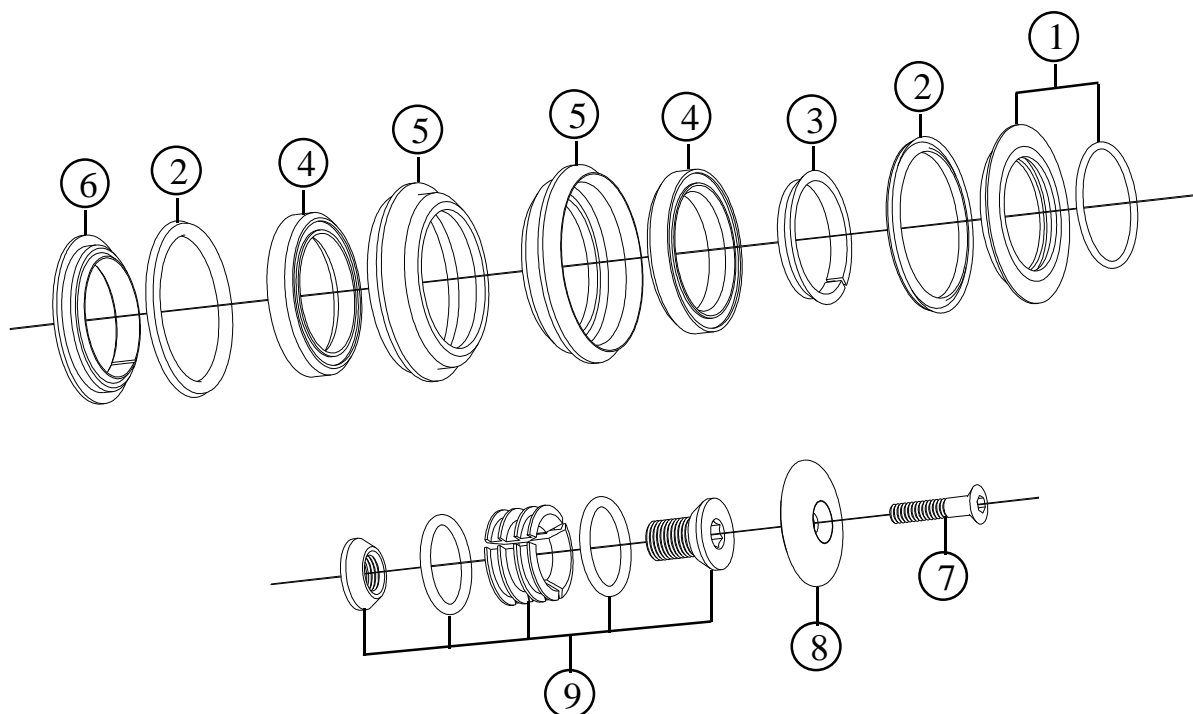
Specifications are subject to change without notice



Item no.	Code	DESCRIPTION	Price €
1	QRTTFRD	Task Team Front. Axle 9mm dia.. Red, Titan, Black, Blue, Orange Lever	28,0
1	QRTTR	Task Team Rear. Axle 10mm dia.. Red, Titan, Black, Blue, Orange Lever	32,0
2	QR00D	Nut for Task Team. Front or Rear	4,0
3	QRTTETR	Task Team E-Thru (Rear). Axle 12mm dia.	39,0
4	QR00ET	Nut for Task Team E-Thru	4,0

Head Set
D-SET ZS 1 1/8"
(S.H.I.S. ZS44/28,6 | ZS44/30)

2013



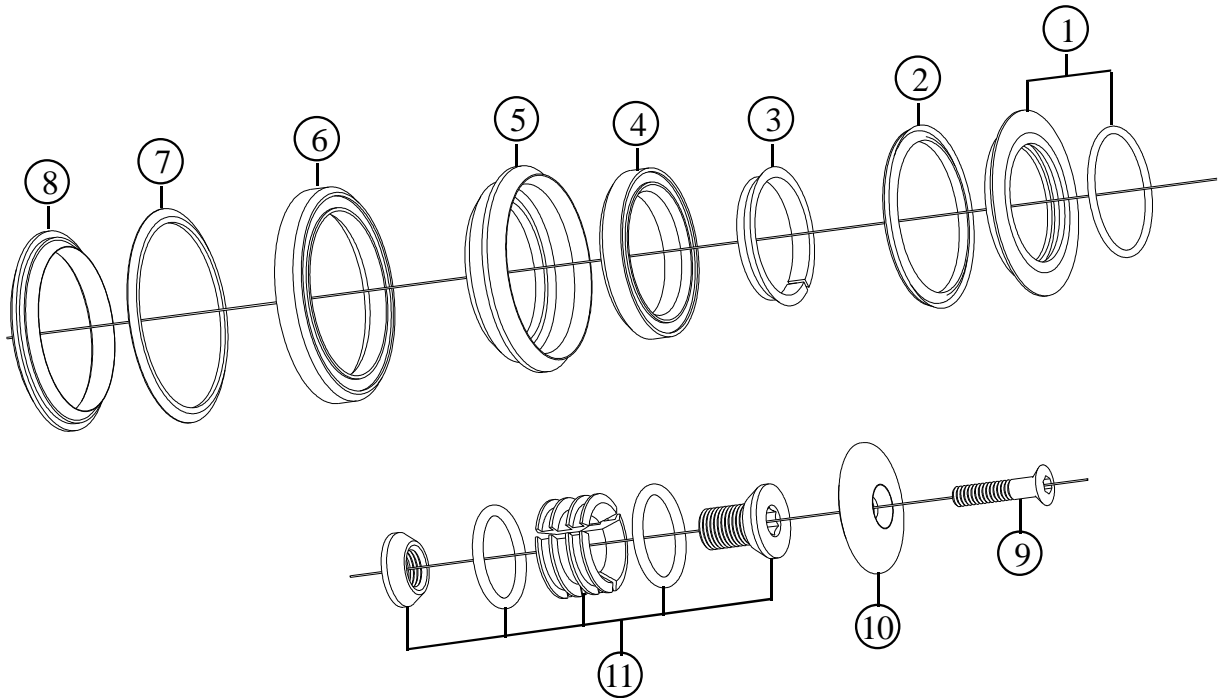
1 1/8" EXPANDER-PLUG TEAM

Item no.	Code	DESCRIPTION	Price €
1	HSDSUCABLK	Upper Head Cone Assembly with O-Ring 2112 (ID 28,30 x 1,78mm) Black anodised	7,0
1	HSDSUCARD	Upper Head Cone Assembly with O-Ring 2112 (ID 28,30 x 1,78mm) Red anodised	7,0
1	HSDSUCATT	Upper Head Cone Assembly with O-Ring 2112 (ID 28,30 x 1,78mm) Titan anodised	7,0
1	HSDSUCABE	Upper Head Cone Assembly with O-Ring 2112 (ID 28,30 x 1,78mm) Blue anodised	7,0
1	HSDSUCAOR	Upper Head Cone Assembly with O-Ring 2112 (ID 28,30 x 1,78mm) Orange anodised	7,0
2	SE3744525VG	Rubber Lip Seal SE 37x44,4x2,5 VG (2pcs)	4,0 pc
3	HSC202	Upper Head Split Cone / Light Alloy	3,0
4-2	DS18MKIT	Kit of Bearing ABC 36°x45° 41x30,15x6,5mm+Rubber Lip Seal SE 37x44,4x2,5 VG	Set 26,0 set
5	HSDSOZBCBL	Lower or Upper Zero Stack Head Cup Housing for 41mm Outer Dia. Bearing / Black anodised	7,00 pc
6	HSDSLHC	Lower Head Cone for 1 1/8" Forks	5,00
7	TSCCE525T	Bolt for play adjustment M5 x 25mm. Cone-Head / Titanium. Gold plated	7,8
8	EP201BLK	Cap / Light Alloy / Black anodised	6,0
8	EP201TRD	Cap / Light Alloy / Red anodised	6,0
8	EP201TTT	Cap / Light Alloy / Titan anodised	6,0
8	EP201TBE	Cap / Light Alloy / Blue anodised	6,0
8	EP201TOR	Cap / Light Alloy / Orange anodised	6,0
9	EP200	Expander-Plug assembly	8,0 set

Specifications are subject to change without notice

Head Set
D-SET 1,5" Taper ZS/IS
 (S.H.I.S. ZS44/28,6 | IS52/40)

2013



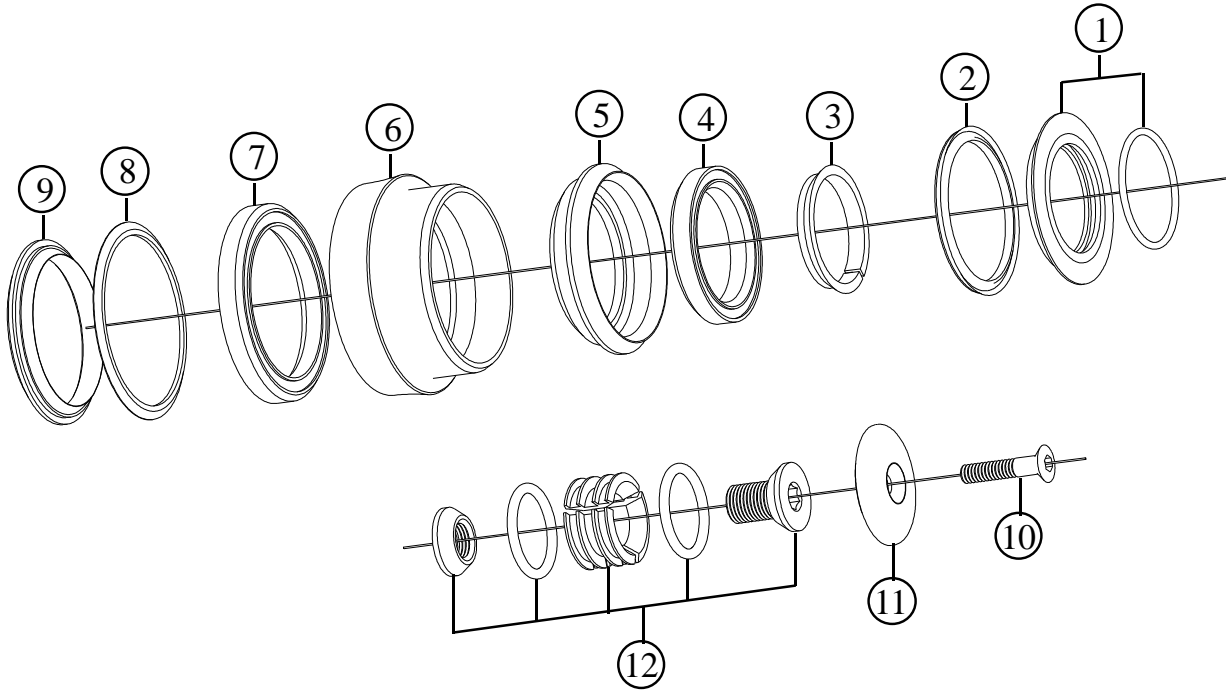
1 1/8" EXPANDER-PLUG TEAM

Item no.	Code	DESCRIPTION	Price €
1	HSDSUCABLK	Upper Head Cone Assembly with O-Ring 2112 (ID 28,30 x 1,78mm) Black anodised	7,0
1	HSDSUCARD	Upper Head Cone Assembly with O-Ring 2112 (ID 28,30 x 1,78mm) Red anodised	7,0
1	HSDSUCATT	Upper Head Cone Assembly with O-Ring 2112 (ID 28,30 x 1,78mm) Titan anodised	7,0
1	HSDSUCABE	Upper Head Cone Assembly with O-Ring 2112 (ID 28,30 x 1,78mm) Blue anodised	7,0
1	HSDSUCAOR	Upper Head Cone Assembly with O-Ring 2112 (ID 28,30 x 1,78mm) Orange anodised	7,0
2	SE3744525VG	Rubber Lip Seal SE 37x44,4x2,5VG	3,0
3	HSC202	Upper Head Split Cone / Light Alloy	4,0
2-4-6-7	DS15MKIT	Bearings ABC 36°x45° 41x30,15x6,5mm+52x40x6,5mm+Rubber Lip Seals	Set 33,5 set
5	HSDSOZBCBLK	Upper Zero Stack Head Cup Housing for 41mm Outer Dia. Bearing / Black anodised	7,00
7	SE45525VG	Rubber Lip Seal SE 52x45x2,5VG	4,0
8	HSE2SLHC15	Lower Head Cone for 1,5" Forks	8,0
8	HSE2SLHC118	OPTIONAL: Lower Head Cone for 1 1/8" Forks	8,0
9	TSCCE525T	Bolt for play adjustment M5 x 25mm. Cone-Head / Titanium. Gold plated	7,8
10	EP201TBLK	Cap / Light Alloy / Black anodised	6,0
10	EP201TRD	Cap / Light Alloy / Red anodised	6,0
10	EP201TTT	Cap / Light Alloy / Titan anodised	6,0
10	EP201TBE	Cap / Light Alloy / Blue anodised	6,0
10	EP201TOR	Cap / Light Alloy / Orange anodised	6,0
11	EP200	Expander-Plug assembly	8,0 set

Specifications are subject to change without notice

D-SET 1,5" Taper 49
(S.H.I.S. ZS44/28,6 | EC49/40)
D-SET 1,5" Taper 44
(S.H.I.S. ZS44/28,6 | EC44/40)

2013



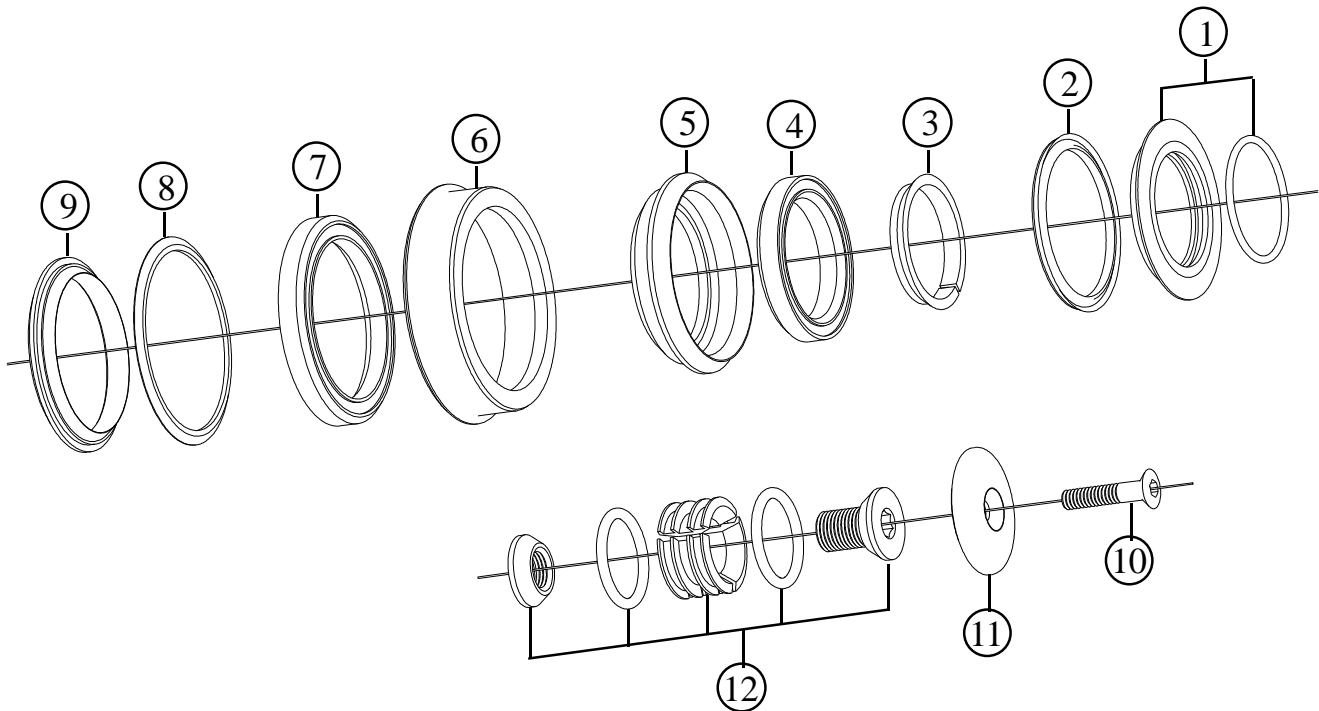
1 1/8" EXPANDER-PLUG TEAM

Item no.	Code	DESCRIPTION	Price €
1	HSDSUCABLK	Upper Head Cone Assembly with O-Ring 2112 (ID 28,30 x 1,78mm) Black anodised	7,0
1	HSDSUCARD	Upper Head Cone Assembly with O-Ring 2112 (ID 28,30 x 1,78mm) Red anodised	7,0
1	HSDSUCATT	Upper Head Cone Assembly with O-Ring 2112 (ID 28,30 x 1,78mm) Titan anodised	7,0
1	HSDSUCABE	Upper Head Cone Assembly with O-Ring 2112 (ID 28,30 x 1,78mm) Blue anodised	7,0
1	HSDSUCAOR	Upper Head Cone Assembly with O-Ring 2112 (ID 28,30 x 1,78mm) Orange anodised	7,0
2	SE3744525VG	Rubber Lip Seal SE 37x44,4x2,5VG	3,0
3	HSC202	Upper Head Split Cone / Light Alloy	3,0
2-4-7-8	DS15MKIT	Bearings ABC 36°x45° 41x30,15x6,5mm+52x40x6,5mm+Rubber Lip Seals	Set 33,5 set
5	HSDSOZBCBLK	Upper Zero Stack Head Cup Housing for 41mm Outer Dia. Bearing / Black anodised	7,00
6	HSDSEC1549	Lower External Head Cup Housing for 52mm Outer Dia. Bearing / 49,6mm frame bore	15,0
6	HSDSEC1544	Lower External Head Cup Housing for 52mm Outer Dia. Bearing / 44mm frame bore	15,0
8	SE45525VG	Rubber Lip Seal SE 52x45x2,5VG	4,0
9	HSE2SLHC15	Lower Head Cone for 1,5" Forks	8,0
9	HSE2SLHC118	OPTIONAL: Lower Head Cone for 1 1/8" Forks	8,0
10	TSCCE525T	Bolt for play adjustment M5 x 25mm. Cone-Head / Titanium. Gold plated	7,8
11	EP201TBLK	Cap / Light Alloy / Black anodised	6,0
11	EP201TRD	Cap / Light Alloy / Red anodised	6,0
11	EP201TTT	Cap / Light Alloy / Titan anodised	6,0
11	EP201TBE	Cap / Light Alloy / Blue anodised	6,0
11	EP201TOR	Cap / Light Alloy / Orange anodised	6,0
12	EP200	Expander-Plug assembly	8,0 set

Specifications are subject to change without notice

Head Set
D-SET 1,5" Taper ZS
(S.H.I.S. ZS44/28,6 | ZS56/40)

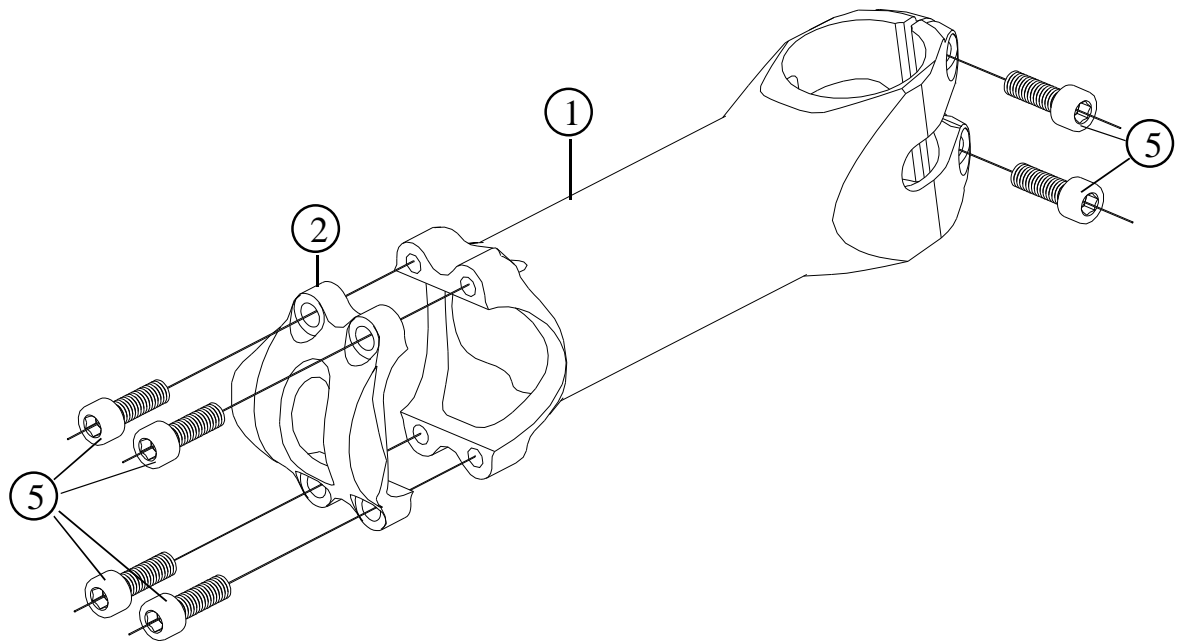
2013



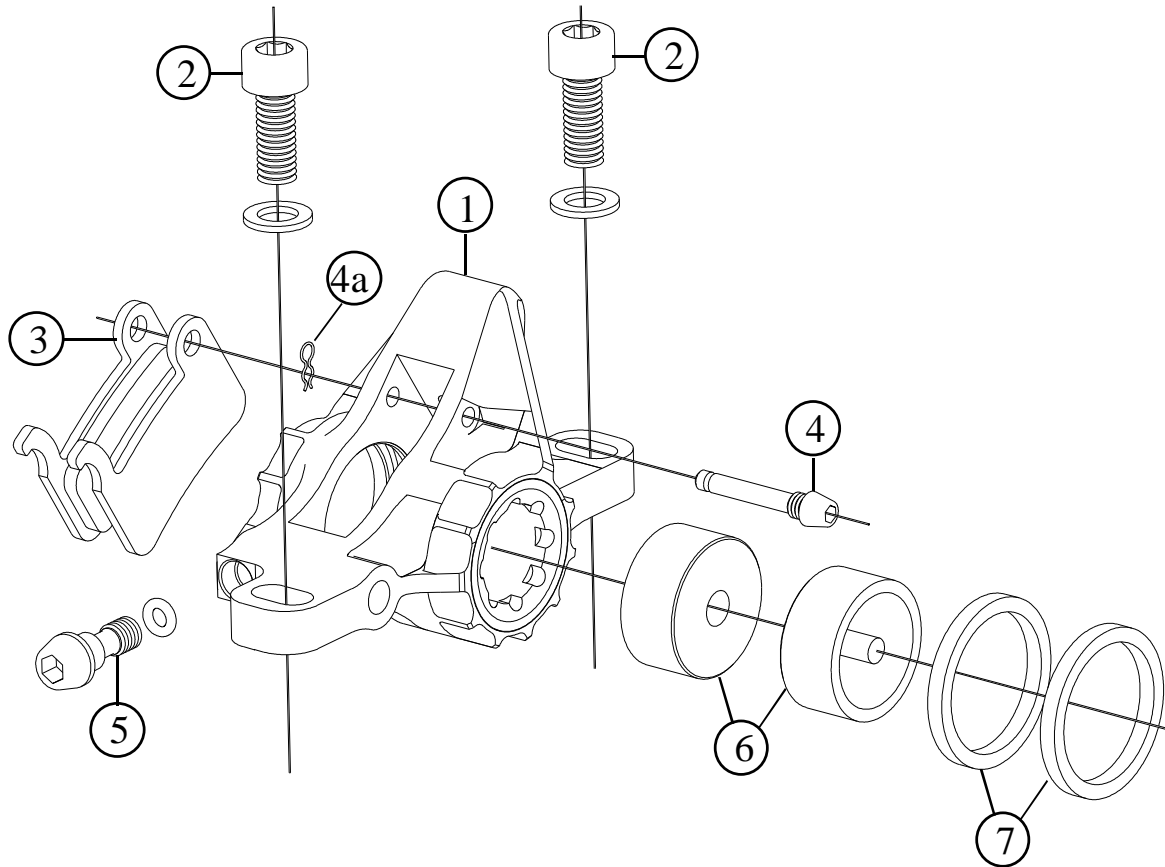
1 1/8" EXPANDER-PLUG TEAM

Item no.	Code	DESCRIPTION	Price €
1	HSDSUCABLK	Upper Head Cone Assembly with O-Ring 2112 (ID 28,30 x 1,78mm) Black anodised	7,0
1	HSDSUCARD	Upper Head Cone Assembly with O-Ring 2112 (ID 28,30 x 1,78mm) Red anodised	7,0
1	HSDSUCATT	Upper Head Cone Assembly with O-Ring 2112 (ID 28,30 x 1,78mm) Titan anodised	7,0
1	HSDSUCABE	Upper Head Cone Assembly with O-Ring 2112 (ID 28,30 x 1,78mm) Blue anodised	7,0
1	HSDSUCAOR	Upper Head Cone Assembly with O-Ring 2112 (ID 28,30 x 1,78mm) Orange anodised	7,0
2	SE3744525VG	Rubber Lip Seal SE 37x44,4x2,5VG	3,0
3	HSC202	Upper Head Split Cone / Light Alloy	3,0
2-4-7-8	DS15MKIT	Bearings ABC 36°x45° 41x30,15x6,5mm+52x40x6,5mm+Rubber Lip Seals	Set 33,5 set
5	HSDSOZBCBLK	Upper Zero Stack Head Cup Housing for 41mm Outer Dia. Bearing / Black anodised	7,00
6	HSDSTH1556	Lower Zero Stack Head Cup Housing for 52mm Outer Dia. Bearing / 56mm frame bore	15,0
8	SE45525VG	Rubber Lip Seal SE 52x45x2,5VG	4,0
9	HSE2SLHC15	Lower Head Cone for 1,5" Forks	8,0
9	HSE2SLHC118	OPTIONAL: Lower Head Cone for 1 1/8" Forks	8,0
10	TSCCE525T	Bolt for play adjustment M5 x 25mm. Cone-Head / Titanium. Gold plated	7,8
11	EP201TBLK	Cap / Light Alloy / Black anodised	6,0
11	EP201TRD	Cap / Light Alloy / Red anodised	6,0
11	EP201TTT	Cap / Light Alloy / Titan anodised	6,0
11	EP201TBE	Cap / Light Alloy / Blue anodised	6,0
11	EP201TOR	Cap / Light Alloy / Orange anodised	6,0
12	EP200	Expander-Plug assembly	8,0 set

Specifications are subject to change without notice



Item no.	Code	DESCRIPTION	Price €
1	WS6B75	Light alloy Stem Shaft 75mm (Black)	66,0
1	WS6B90	Light alloy Stem Shaft 90mm (Black)	66,0
1	WS6B100	Light alloy Stem Shaft 100mm (Black)	66,0
1	WS3B110	Light alloy Stem Shaft 110mm (Black)	66,0
2	WS6BCBLK	Stem Cap / Black	18,0
2	WS6BCTT	Stem Cap / Titan	18,0
2	WS6BCRD	Stem Cap / Red	18,0
2	WS6BCBE	Stem Cap / Blue	18,0
2	WS6BCOR	Stem Cap / Orange	18,0
5	TCC515TIKIT	Allen Bolt M5x15 / Titanium - Gold Plated	Set of 6pcs 42,0 set

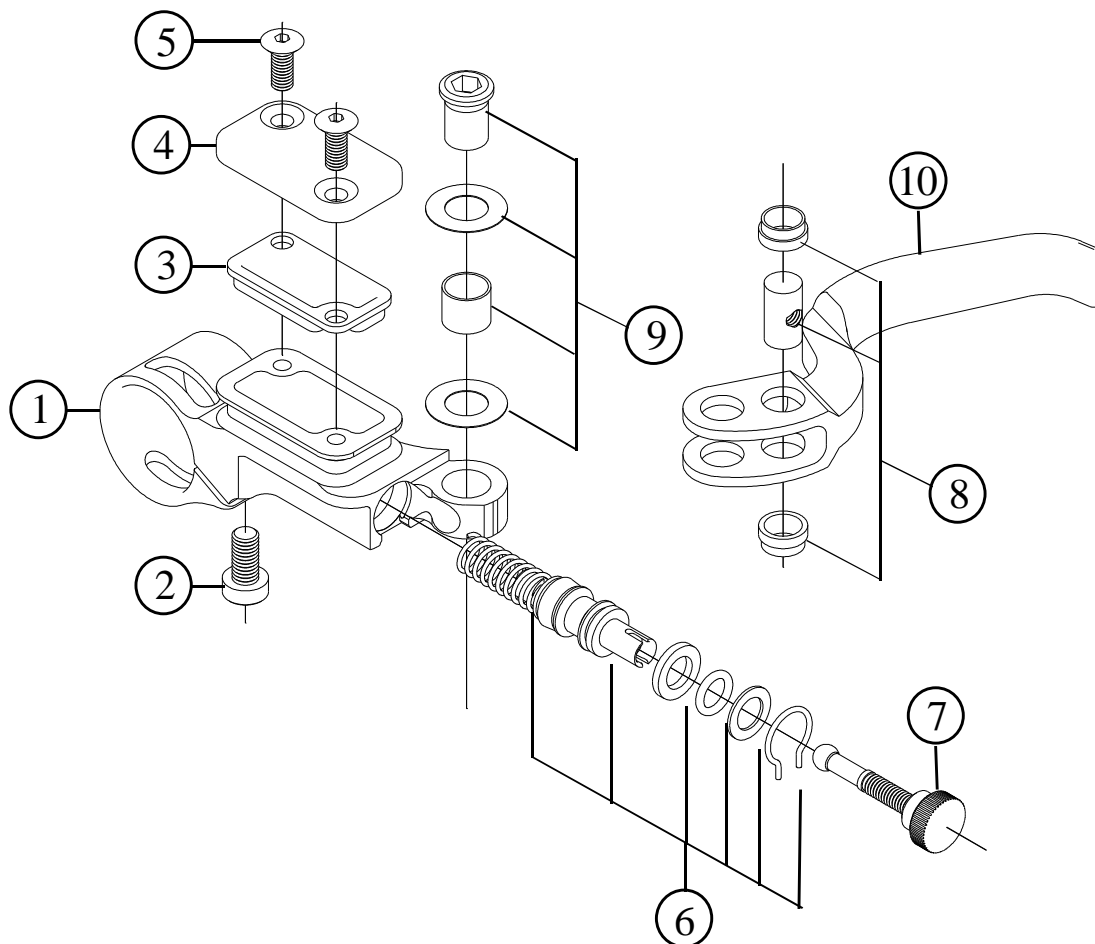
2013

Item no.	Code	DESCRIPTION	Price €
1	DBRCAHARD	Caliper Body & Cap. Post-Mount Type. Hard Anodised with Red Cap	65,0
1	DBRCAHATT	Caliper Body & Cap. Post-Mount Type. Hard Anodised with Titan Cap	65,0
1	DBRCAHABLK	Caliper Body & Cap. Post-Mount Type. Hard Anodised with Black Cap	65,0
1	DBRCAHABE	Caliper Body & Cap. Post-Mount Type. Hard Anodised with Blue Cap	65,0
1	DBRCAHAOR	Caliper Body & Cap. Post-Mount Type. Hard Anodised with Orange Cap	65,0
2	TCC615SS	Body Fixing Bolts M6x15 & Washer. Stainless Steel (XC Team - Enduro)	0,3 pc
2	TCC615TI	Body Fixing Bolts M6x15 & Washer. Titanium, Gold Plated (XC Super Race)	Set of 4pcs 30,0 set
3	AD014MS	Pads. XTR compatible w/spring. Metallic compound. Steel Backing (Copper colour)	19,7
3	AD014SA	Pads. XTR compatible w/spring. Organic Compound. Alloy Backing (Silver colour)	18,4
4-4a	DBR300CB	Pads Fixing Pin. Light Alloy with Pin Spring. Black Anodised	3,0
5	DBR300CD	Bleed Bolt. Light Alloy & O-Ring	3,0
6	DBR300P	Pistons. Hard Anodised	Set of 4pcs 40,0 set
7	DBRCMKIT	EPDM Seals	Set of 4pcs 15,0 set

Specifications are subject to change without notice

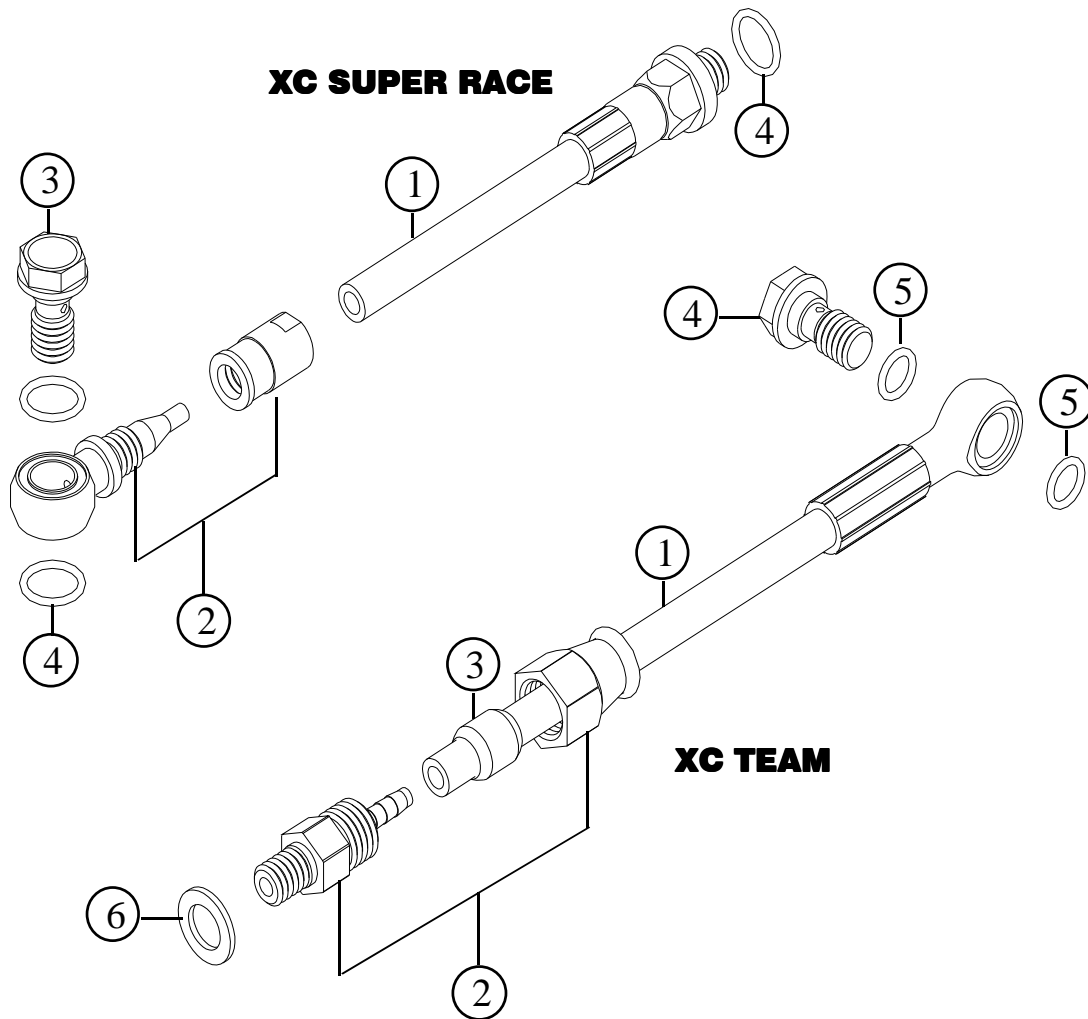
Disc Brakes – Pumps
DBR XC SUPER RACE
DBR XC TEAM

2013



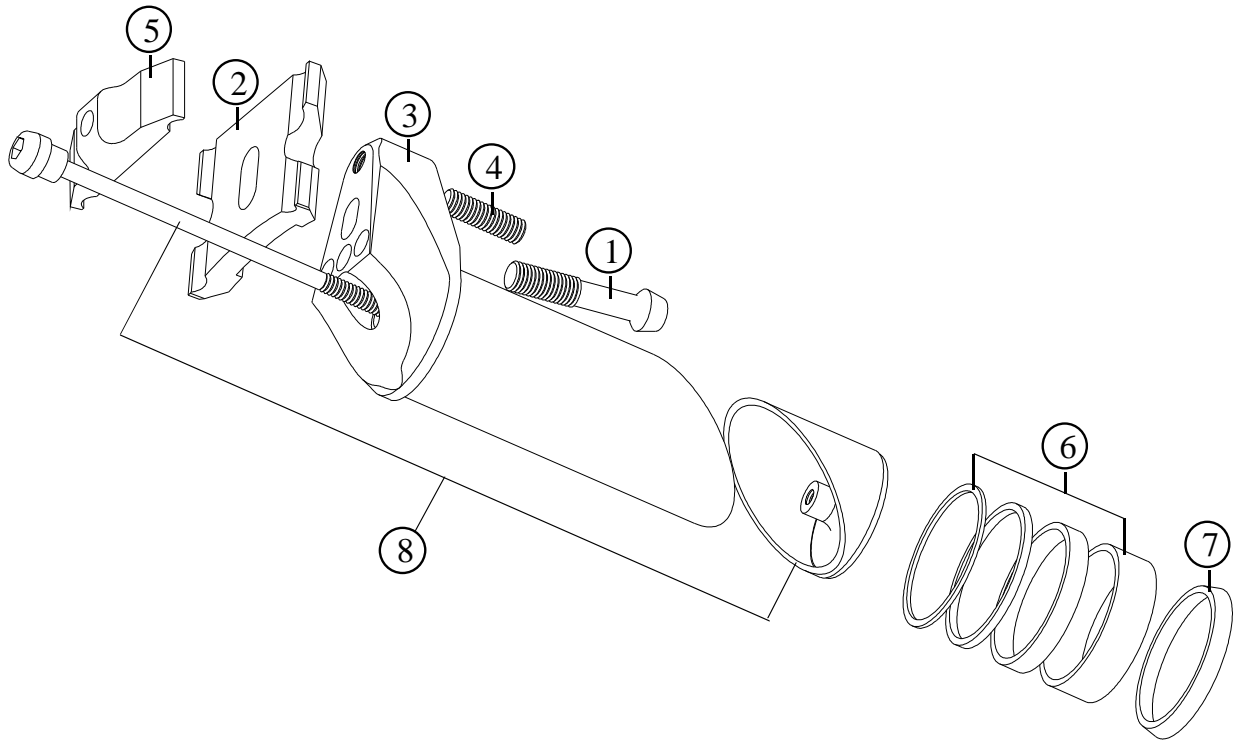
Item no.	Code	DESCRIPTION	Price €
1	DBRPUHAR	Brake Pump Body. Right side. Hard Anodised	45,0
1	DBRPUHAL	Brake Pump Body. Left side. Hard Anodised	45,0
2	TCC510T	Allen Bolt M5x12 / Titanium - Gold Plated (XC Super Race)	Set of 2pcs 14,6 set
2	TCC510S	Allen Bolt M5x10 / Steel (XC Team - Enduro)	0,08 pc
3	DBR300RM	Reservoir Membrane. EPDM Rubber	4,0
4	DBR300LBBLK	Reservoir Cap. Light Alloy – Black Anodised	7,0
4	DBR300LBRD	Reservoir Cap. Light Alloy – Red Anodised	7,0
4	DBR300LBTT	Reservoir Cap. Light Alloy – Titan Anodised	7,0
4	DBR300LBBE	Reservoir Cap. Light Alloy – Blue Anodised	7,0
4	DBR300LBOR	Reservoir Cap. Light Alloy – Orange Anodised	7,0
5	TSCCE45S	Come Head Bolt. M4 x 8mm. Stainless Steel (XC Team - Enduro)	Set of 2 pcs 0,4 set
5	TSCCE48TI	Come Head Bolt. M4x8mm. Titanium, Gold Plated (XC Super Race)	Set of 2 pcs 9,0 set
6	DBR300PK	Piston Kit. Piston Parts, EPDM Seals, Washers, Springs and Assembly Tool	Set of 2 kits 34,0 set
7	DBR300BLPR	Brake Lever Push Rod and Reach Adjuster	Set of 2 kits 12,0 set
8	DBR300BLPRA	Brake Lever Push Rod Axle & Bushings	Set of 2 kits 12,0 set
9	DBR300BLBA	Brake Lever Bushing, Axle, Shims and Seeger	Set of 2 kits 12,0 set
10	DBR300BL	Brake Lever. Right or Left side. Light Alloy. Black Anodised	25,0

Specifications are subject to change without notice



Item no.	Code	DESCRIPTION	Price €
XC SUPER RACE			
1	FTCT850	Frentubo Carbotech Hose and Pressed M-Joint (light alloy). Front 850mm long	47,6
1	FTCT1450	Frentubo Carbotech Hose and Pressed M-Joint (light alloy). Rear 1450mm long	60,0
1	FTCT1750	Frentubo Carbotech Hose and Pressed M-Joint (light alloy). Rear 1750mm long	66,7
2	FT13508	Banjo in Light Alloy + Locking Nut for Banjo in Light Alloy	Set 11,9
3	FTB50106	Locking Bolt of Banjo in Titanium – Gold Plated	11,0
4	OREPDM7x1	O-Ring 7 x 1mm in EPDM rubber	Set of 10 pcs 4,0 set
XC TEAM			
1	HHBB-950	Stainless Steel Braided hose with Pressed Banjo (steel). Front 950mm long	14,0
1	HH-BB-1550	Stainless Steel Braided hose with Pressed Banjo (steel). Rear 1550mm long	15,0
1	HH-BB-1750	Stainless Steel Braided hose with Pressed Banjo (steel). Rear 1750mm long	16,0
2	HP-02/4-10	M-Joint in Steel + Locking Nut of M-Joint in Stainless Steel	Set 7,0
3	HP-06-10	Compress Barrel for 5,5mm hose	Set of 10 pcs 8,0 set
4	HP-03-10	Locking Bolt of Banjo in Stainless Steel	2,0
5	OR-EPDM6x1	O-Ring 6 x 1mm in EPDM rubber	Set of 6 pcs 6,0 set
6	CW96	Copper Washer 9,9 x 6 x 1mm	1,0

2013



Item no.	Code	DESCRIPTION	Price €
1	TCC730T	Allen Bolt M7 x 35mm in Titanium – Gold Plated. Special design	12,1
1	TCC730	Allen Bolt M6 x 35mm in Steel	0,3
2	STOS02	Rails Platform / Light Alloy	14,0
3	ST11EBT	Light alloy Body for Titanium Hardware	45,0
4	STOS04	Dowel M6	0,1
5	STOS03T	Rails Clamp for M7 Titanium Bolt (Black anodised)	10,5
6	ST11ESPK	Kit of 4 Plastic Spacers	6,0
7	ST11ESPE	Tapered Plastic Spacer	1,0
8	ST11EPT	Pulling Rod in Titanium and Slanted Base	Set 24,0

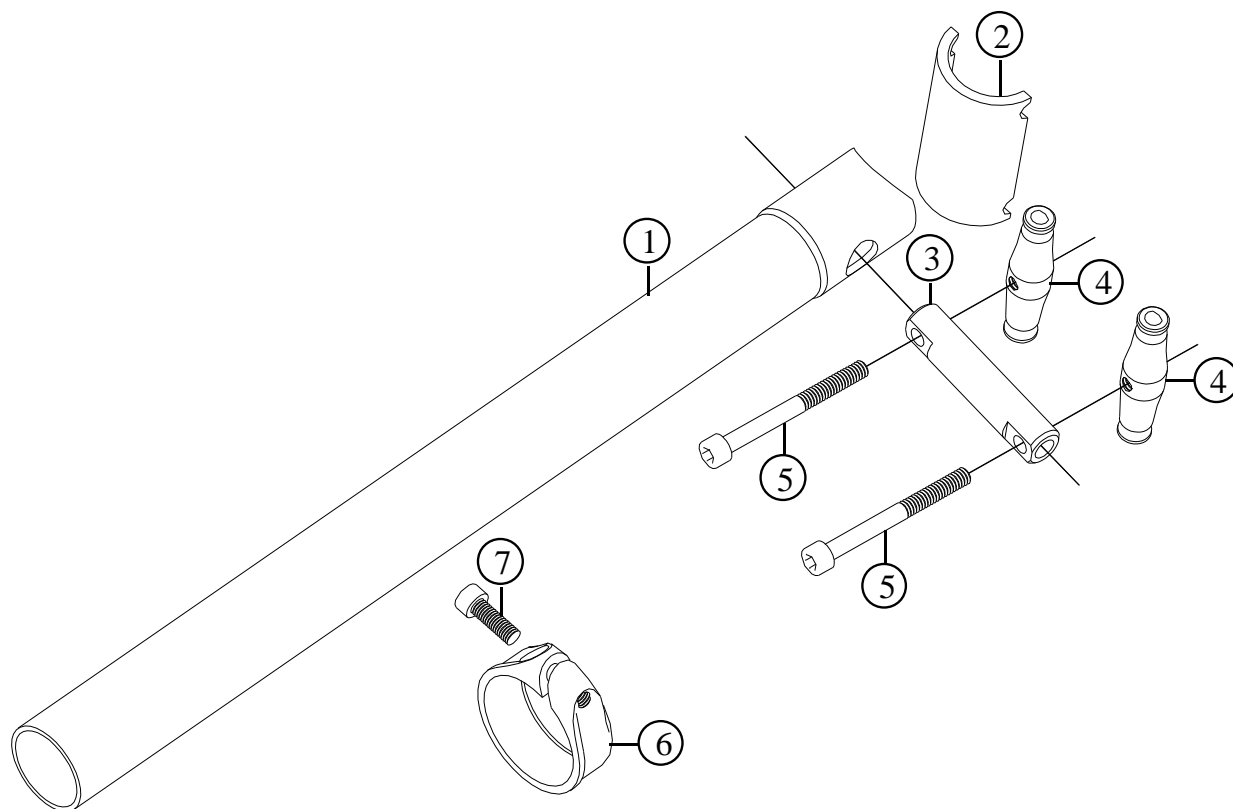
Specifications are subject to change without notice

Seatpost for MTB

ST-M10 Ti. 27,2 x 350
ST-M10 Ti. 30,9 x 350
ST-M10 Ti. 31,6 x 350
ST-M10 XL Ti. 30,9 x 400
ST-M10 XL Ti. 31,6 x 400

FRM
 BIKETECHNOLOGY

2013

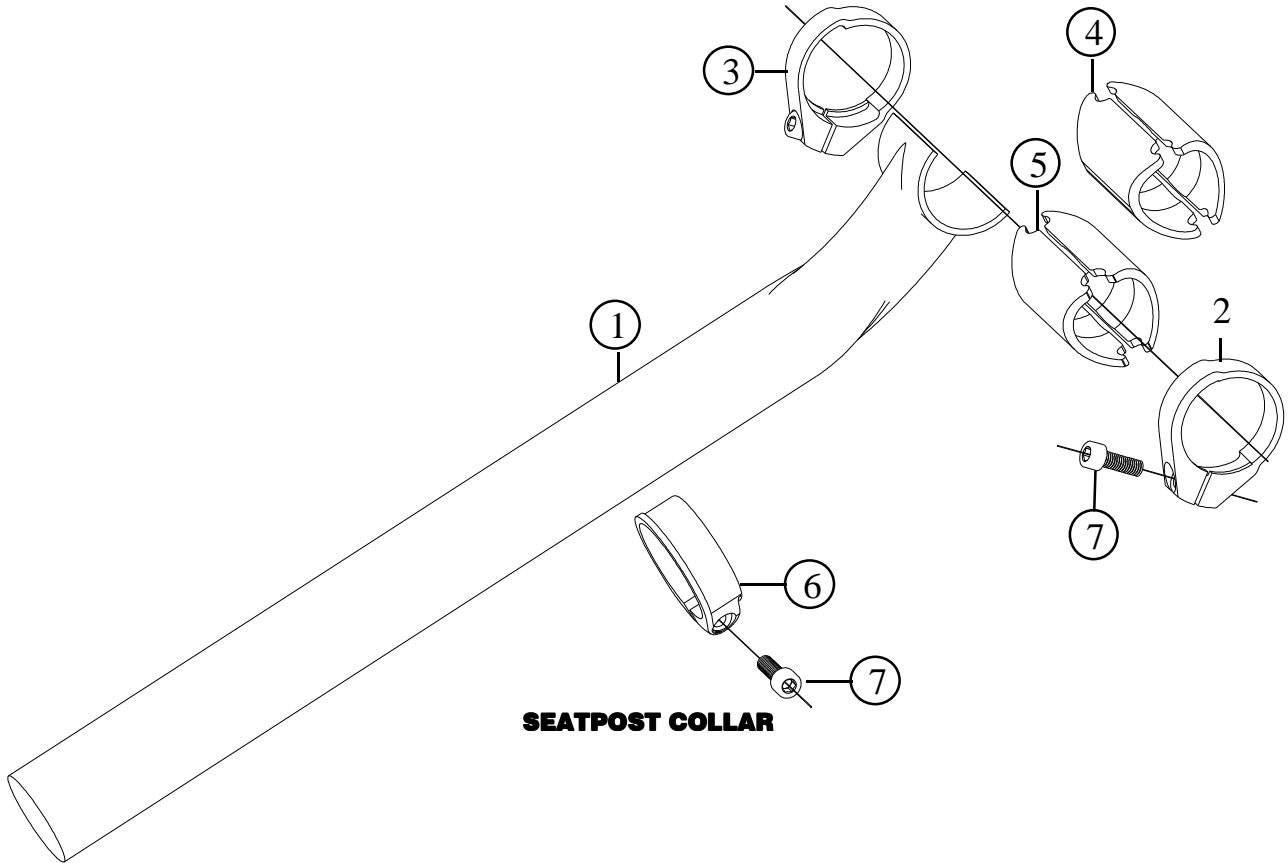


Item no.	Code	DESCRIPTION	Price €
1	STM101B	Light Alloy Post 27,2 x 350mm	56,0
1	STM101C	Light Alloy Post 30,9 x 350mm . Externally double butted	56,0
1	STM101D	Light Alloy Post 31,6 x 350mm . Externally double butted	56,0
1	STM101C4	Light Alloy Post 30,9 x 400mm . Externally double butted	64,0
1	STM101D4	Light Alloy Post 31,6 x 400mm . Externally double butted	64,0
2	STM102RD	Rails Cradle. Light Alloy. Red anodised	8,0
2	STM102TT	Rails Cradle. Light Alloy. Titan anodised	8,0
2	STM102BE	Rails Cradle. Light Alloy. Blue anodised	8,0
2	STM102BLK	Rails Cradle. Light Alloy. Black anodised	8,0
2	STM102OR	Rails Cradle. Light Alloy. Orange anodised	8,0
3	STM103T	Pin for Titanium bolts. Black anodised	7,0
4	STM104T	Rail Clamp for M6 Titanium Bolts	Set of 2pcs 14,0 set
5	TCC558T	Allen Bolt M6 x 50mm in Titanium – Gold Plated. Special design	Set of 2pcs 26,0 set
6	STAC35	SC35 Seat Clamp. 34,9mm dia Black, Titan, Red, Blue, Orange anodised. Without Bolt	11,0
6	STAC32	SC32 Seat Clamp. 31,6mm dia Black, Titan, Red, Blue, Orange anodised. Without Bolt	11,0
7	TCC515T	Allen Bolt M5 x 15 / Titanium – Gold Plated	7,6

Specifications are subject to change without notice

Seatpost for Road & MTB
ST-R Black Hole
ST-M Black Hole

2013



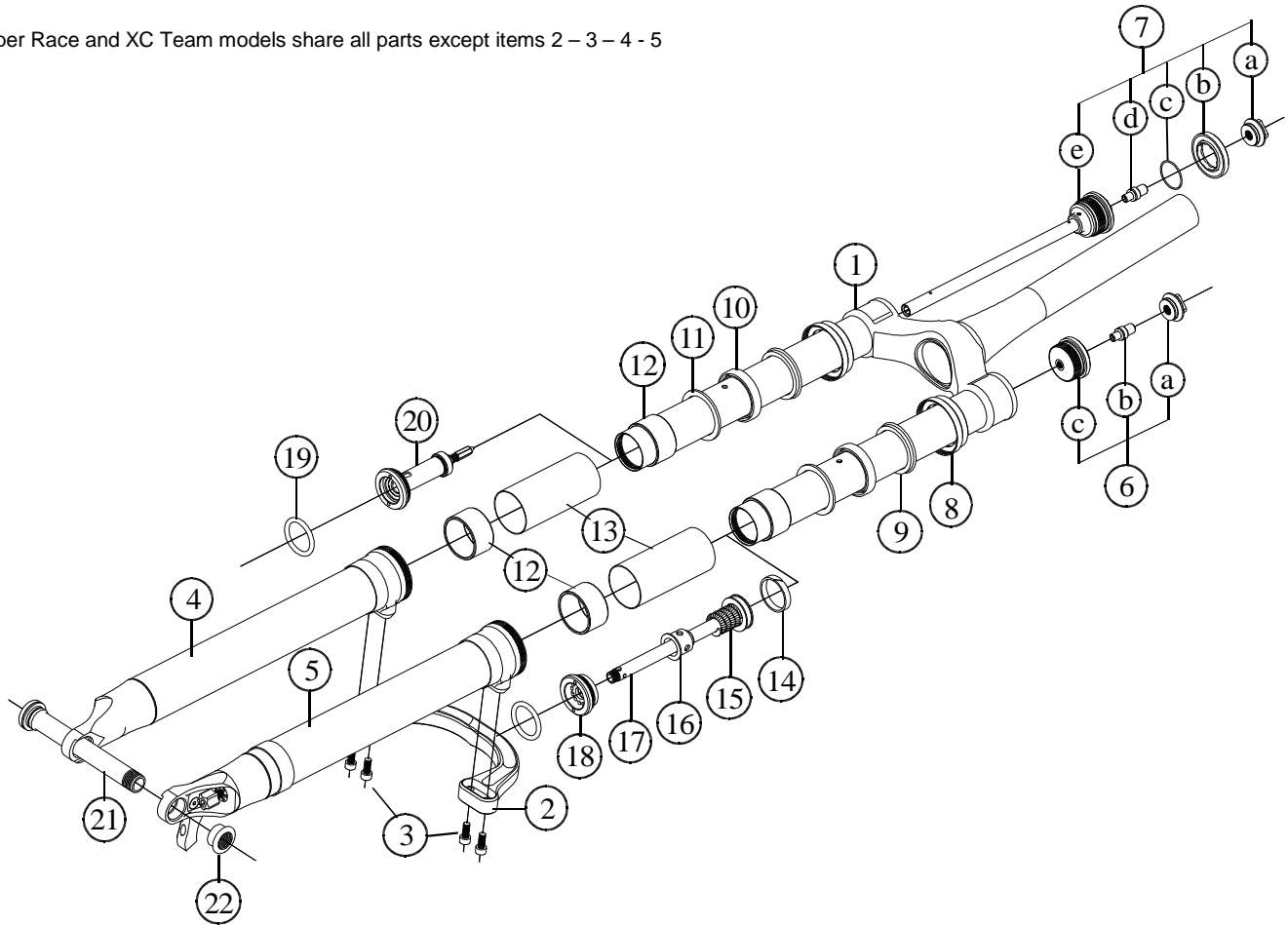
Item no.	Code	DESCRIPTION	Price €
1	STMRH	Seatpost 31,6 x 250mm. Carbon Fibre	260,0
1	STMBH	Seatpost 31,6 x 350mm. Carbon fibre	260,0
2	STBHCR	Right Hand Clamp. Black anodised	12,0
3	STBHCL	Left Hand Clamp. Black anodised	12,0
4	STBHRS	Craddle for regular railed saddles. Asymmetric. Titan anodised (made of 2pcs)	14,0
5	STBHBHS	Craddle specific for FRM Black Hole Saddle. Black anodised (made of 2pcs)	14,0
6	STAC35	SC35 Seat Clamp. 34,9mm dia Black, Titan, Red, Blue, Orange anodised. Without Bolt	11,0
6	STAC32	SC32 Seat Clamp. 31,6mm dia Black, Titan, Red, Blue, Orange anodised. Without Bolt	11,0
7	TCC515T	Allen Bolt M5 x 15 / Titanium – Gold Plated	7,6

Specifications are subject to change without notice

MTB Suspension Fork
AIR-WAY 32 SUPER RACE 27,5"
AIR-WAY 32 XC TEAM 27,5"

2013

Super Race and XC Team models share all parts except items 2 – 3 – 4 - 5



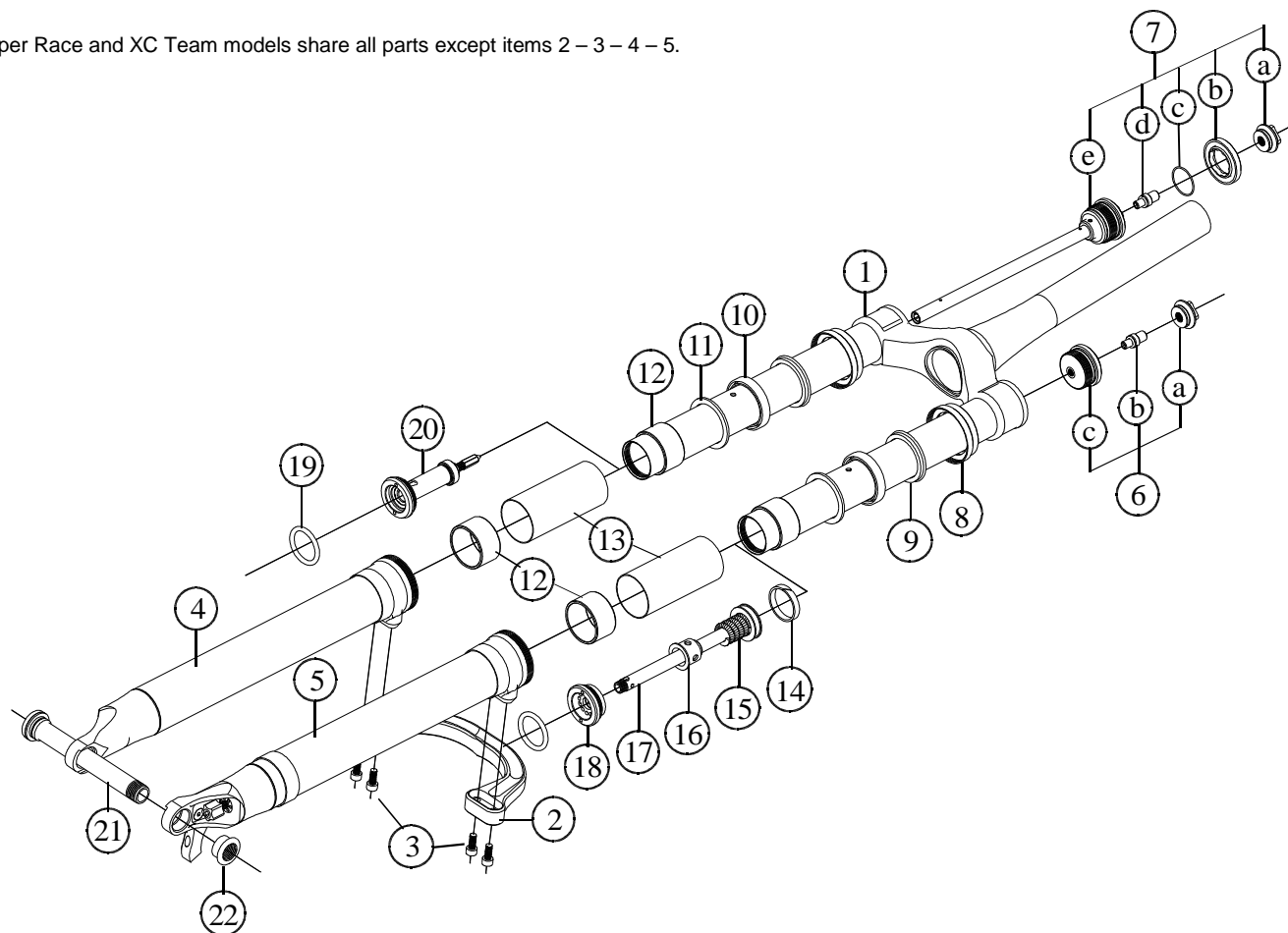
Specifications are subject to change without notice

Item no.	Code	DESCRIPTION	Price €
1	AW32CA15	Crown assembly with 32mm stanchions. 1,5 Tapered Steerer Tube	325,0
2	03RBEVO	Reversed Brace for XC Team. Light Alloy. Red anodised	72,0
3	TCC512Ti	Brace Fixing Bolt. M5x12mm Torx25. Titanium, Gold Plated	Set of 4pcs 29,2 set
4	AW32RLL27	Right Lower Leg for XC Team 27,5". QR15 Dropouts. Carbon Fibre	160,0
5	AW32LLL27	Left Lower Leg for XC Team 27,5". QR15 Dropouts. Carbon Fibre	190,0
6a - 7a	21C	Air Valve Cap & O-Ring 2056 (I.D. 14 x 1,78mm)	Set of 2pcs 12,0 set
6b - 7d	21B30	Air Valve Body & O-Ring 2021 (I.D. 5,28 x 1,78mm)	6,0
6c	AW32AV	Air Valve for 32mm Stanchions & O-Ring 2106 (I.D. 26,70 x 1,78mm)	6,0
7b - 7c	AW32SSVK	Knob of SSV Valve & O-Ring 1x22mm	8,0
7e	AW32SSVA	Actuator of SSV Valve – Assembly of Several Parts	20,0
8	AW32OSLR	Oil Seal Lock-Ring for 32mm Stanchions / Light Alloy	6,0 pc
9 - 10	AW32MKIT	02 Dust Seal + 02 Oil Seal TTO TC 32x42x7mm + Oil Seal Tool 32 + 20cc DOT 5,1 oil	27,0 kit
11	AW32OSS	Shim / Light Alloy	Set of 2pcs 3,0 set
12	W30032	Bushings. Iglodur W300 36 x 32 x 20mm	Set of 4pcs 30,0 set
13	AW32BS	Bushing Spacer / Light Alloy	3,0 pc
14	AW32PS	Piston Seal for 32mm Stanchions FG 15049	0,5
15	09SP	Negative – Top-Out Spring (Dia. 18,4mm. Length 25mm)	2,0
16	AW32TL	Tavel Limitator (19mm long) for 85mm travel. 100mm travel without spacer	3,0
17	AW32PSA	Piston/Shaft Assembly. 28mm Piston Dia. 140mm Shaft. Light Alloy	15,0
18	AW32OVA	Oil Valve Assembly for 32mm Stanchions	8,0
19	10A	Bottom-Out Damper. O-Ring	Set of 2pcs 1,0 set
20	AW32SSV	SSV Valve Assembly for 32mm Stanchions	17,0
Not Visible	18	Damping Adjustment Piston & O-Ring 2012 (I.D.) 2,90 x 1,78mm)	2,0
21	QR15AX	QR15 Axle (Hard Anodised)	37,0
22	QR15AXN	QR15 Axle Nut (Hard Anodised)	5,0
22a	QR15AXW	QR15 Washer (Delrin)	0,5
23	OST32	Oil Seal Tool for 32mm Stanchions	4,5

MTB Suspension Fork
AIR-WAY 32 SUPER RACE 29"
AIR-WAY 32 XC TEAM 29"

2013

Super Race and XC Team models share all parts except items 2 – 3 – 4 – 5.



Specifications are subject to change without notice

Item no.	Code	DESCRIPTION	Price €
1	AW32CA15	Crown assembly with 32mm stanchions. 1,5 Tapered Steerer Tube	325,0
2	03RBEVO	Reversed Brace for XC Team. Light Alloy. Red anodised	72,0
3	TCC512Ti	Brace Fixing Bolt. M5x12mm Torx25. Titanium, Gold Plated	Set of 4pcs 29,2 set
4	AW32RLL29	Right Lower Leg for XC Team 29". QR15 Dropouts. Carbon Fibre	160,0
5	AW32LLL29	Left Lower Leg for XC Team 29". QR15 Dropouts. Carbon Fibre	190,0
6a - 7a	21C	Air Valve Cap & O-Ring 2056 (I.D. 14 x 1,78mm)	Set of 2pcs 12,0 set
6b - 7d	21B30	Air Valve Body & O-Ring 2021 (I.D. 5,28 x 1,78mm)	6,0
6c	AW32AV	Air Valve for 32mm Stanchions & O-Ring 2106 (I.D. 26,70 x 1,78mm)	6,0
7b - 7c	AW32SSVK	Knob of SSV Valve & O-Ring 1x22mm	8,0
7e	AW32SSVA	Actuator of SSV Valve – Assembly of Several Parts	20,0
8	AW32OSLR	Oil Seal Lock-Ring for 32mm Stanchions / Light Alloy	6,0 pc
9 - 10	AW32MKIT	02 Dust Seal + 02 Oil Seal TTO TC 32x42x7mm + Oil Seal Tool 32 + 20cc DOT 5,1 oil	27,0 kit
11	AW32OSS	Shim / Light Alloy	Set of 2pcs 3,0 set
12	W30032	Bushings. Iglodur W300 36 x 32 x 20mm	Set of 4pcs 30,0 set
13	AW32BS	Bushing Spacer / Light Alloy	3,0 pc
14	AW32PS	Piston Seal for 32mm Stanchions FG 15049	0,5
15	09SP	Negative – Top-Out Spring (Dia. 18,4mm. Length 25mm)	2,0
16	AW32TL	Tavel Limitator (19mm long) for 85mm travel. 100mm travel without spacer	3,0
17	AW32PSA	Piston/Shaft Assembly. 28mm Piston Dia. 140mm Shaft. Light Alloy	15,0
18	AW32OVA	Oil Valve Assembly for 32mm Stanchions	8,0
19	10A	Bottom-Out Damper. O-Ring	Set of 2pcs 1,0 set
20	AW32SSV	SSV Valve Assembly for 32mm Stanchions	17,0
Not Visible	18	Damping Adjustment Piston & O-Ring 2012 (I.D.) 2,90 x 1,78mm)	2,0
21	QR15AX	QR15 Axle (Hard Anodised)	37,0
22	QR15AXN	QR15 Axle Nut (Hard Anodised)	5,0
22a	QR15AXW	QR15 Washer (Delrin)	0,5
23	OST32	Oil Seal Tool for 32mm Stanchions	4,5

FRM

B I K E T E C H N O L O G Y

**Via Mattei 18/a
48025 Riolo Terme (RA)
Italy**

tel. +39 0546 70310

fax +39 0546 74623

e-mail: info@frmbike.com

Ordini Italia: ordini@frmbike.biz

Foreign orders: orders@frmbike.com

www.frmbike.com